

**YESHIVA COLLEGE PLAYERS
PRESENT**

**Y
E
L
L
O
W
J
A
C
K**

**LAMPORF AUDITORIUM
MARCH 14, 1943**

“The
drama’s laws
the drama’s patrons
give, for we that live
to please must
please to
live.”

—DR. JOHNSON

YESHIVA COLLEGE PLAYERS

Present

YELLOW JACK

by SIDNEY HOWARD
in collaboration with
PAUL DE KRUIF

Directed by
CHAIM BRISMAN

Set and Lighting by
J. SHELLEY APPLBAUM

CAST

(in order of appearance)

Characters whose names appear in *italics* are inventions of the author to serve as substitutes for living participants in this story.

<i>O'HARA</i>	} Privates,	<i>Samuel Bloom</i>	
<i>BRINKERHOF</i>		<i>Bernard Auerbach</i>	
<i>McCLELLAND</i>		M.C.,	<i>Michel Geller</i>
<i>BUSCH</i>	} U.S.A.	<i>Solomon Reichel</i>	
<i>BLAKE</i> , Special Nurse		<i>Jerome Robbins</i>	
<i>REED</i> , MAJOR, M.C., U.S.A.	<i>Allen Mandelbaum</i>		
<i>AGRAMONTE</i>	} Assistant Surgeons, M.C.,	<i>Morton Rosen</i>	
<i>LAZEAR</i>		} Members of the American Yellow	<i>Harold Lebowitz</i>
<i>CARROLL</i>			Fever Commission in Cuba
<i>GORGAS</i> , MAJOR, M.C., U.S.A.	<i>Herman Tanenbaum</i>		
<i>COLONEL TORY</i> , of the Marine Corps Hospital	<i>Harold Schulweis</i>		
<i>MAJOR CARTWRIGHT AND SERGEANT</i>	<i>Julian Gorodetzer</i>		
<i>AMES</i> , Assistant Surgeon, M.C., U.S.A.	<i>Israel Slochowsky</i>		
<i>FINLAY</i> , M.D.	<i>Nathan Rosenbaum</i>		
<i>DEAN</i> , PRIVATE, U.S.A.	<i>Theodore Comet</i>		
<i>GRAVEDIGGER</i>	<i>Carmi Charny</i>		
<i>QUARTET</i>	<i>Al Salkowitz, Arthur Chiel, Edward Snow, Jack Koenigsberg</i>		

Synopsis of Acts

ACT I — Cuba, Summer of 1900

ACT II — Cuba, Fall of 1900

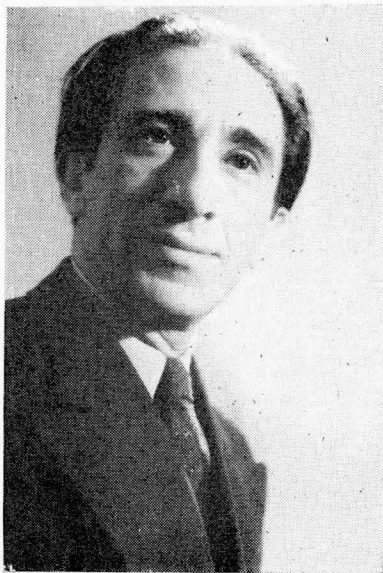
Additional dialogue by ALLEN MANDELBAUM

Our Director . . .

Our sparkling-eyed director, Chaim Brisman, has brought his warm personality to bear upon the Y. C. Players. An ardent exponent of the Stanislavsky-Vachtangov school of acting, Mr. Brisman has accented his watchword, "stylized realism", from his dramatic activities in Poland and Russia to his theatrical efforts on this side of the Atlantic.

Among our mentor's many achievements, the most notable has been his direction of Sholom Aleichem's "Two Hundred Thousand" for the American Repertory Theatre on the Pacific Coast, which marked the first time this play had been produced in English. Mr. Brisman has also instructed at the New Theatre Laboratory in Hollywood, directed for the Artef Theatre, and staged "Le Médecin Malgré Lui" for the New School. The Radio Division of the Federal Theatre has also benefited from his direction.

The infinite patience and kind understanding with which he has guided us have endeared Chaim Brisman and his sincere ideals to the Players.



The Play

The willingness with which men of science have sacrificed their lives that a fundamental scientific truth may prevail was more or less a professional secret until the able pen of Paul de Kruif in a notable series of works showed how common such a practice had become among researchers. In "Yellow Jack", Sidney Howard, collaborating with Mr. de Kruif, dramatizes one such incident, admirably relating the circumstances surrounding the conquest of yellow fever. It is effective, gripping drama, and one can readily understand why Mr. Brooks Atkinson called "Yellow Jack" a remarkable play.

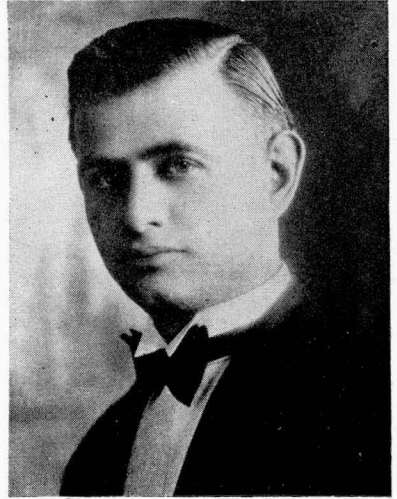
As one sees the action unfold, one may perhaps lose patience with characters like Lazear and Finlay, who are motivated not by the strict requirements of science, but by some impelling whim of whose presence they are unaware and whose driving force they have identified with their own virtues. Or, indeed, one may be roused to anger by such a character as Colonel Tory, whose smugness only reflects the stupidity of the turpid bureaucracy he represents. One even may smile good-naturedly at the motives which induce O'Hara, McClel-

land, Busch and Brinkerhoff to participate in an epoch-making discovery. Yet, these men, influenced as they are by the personality of Walter Reed, serve chiefly to illustrate that even the most impersonal of all of man's activities, scientific research, must consider the importance of the human factor. Walter Reed was successful chiefly because he was able to effect compromises among his individual research workers, and in the end he obtained for them what they had modestly asked for in the first place; in the annals of medical science only the eminence of a footnote.

A word about the setting is not inappropriate here. It is fitting that the presentation of the great age of discovery in science should go back to the great age of discovery in the theatre for its effects. The unconventional scenery here used approximates the simplicity of the Elizabethan stage. Variety is achieved through changing the spot of the action and through lighting. And do not regard the quartet which you hear off-stage as just pleasant background.

Our Guardian Angel...

Our guardian angel, Mr. Harry Schumer, has aided and encouraged us no end in our dramatic endeavors. His generosity has known no bounds. Lights, curtains, sound equipment, and numerous properties have been donated to the Yeshiva College Players by Mr. Schumer. Through sharing with us the fruits of his practical experience in the theatrical world, our patron has helped the Players hurdle the numerous technical difficulties involved in "Yellow Jack." For all of this and for the other countless good deeds he has done, the Yeshiva College Players are deeply grateful to Mr. Harry Schumer.



THE YESHIVA COLLEGE PLAYERS

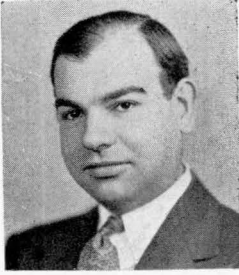
Wish to Announce a

TWO HUNDRED DOLLAR AWARD

By Mr. Harry Schumer

*for the best, all-male, full-length play submitted
by any playwright, amateur or professional.*

All manuscripts must be presented to the
Yeshiva College Players before November 1st, 1943.



DR. IRVING
LINN

*Faculty Advisor
Yeshiva College
Players*

Our Past...

Our dramatic society is one with a very satisfying past, for the Yeshiva College Players have graced the boards of the Lamport stage with many a fine performance. From the "Journey's End" in 1936 up to "The Modern Prometheus" in 1942, our dramatic activities have re-

ceived the well earned plaudits of critic and playgoer alike.

The going has not always been easy, but with Dr. Irving Linn, our faculty advisor, at our side, we have weathered all storms and have come up this year with a presentation to top all others.

We have gone "all out" in our effort to top "The Modern Prometheus" of last year. The heartening notices we gained then have spurred us on to surpass anything the Players have done before.

As we expectantly await curtain-rise, our only hope is that you get as much out of "Yellow Jack" as we have put into it.

Compliments of

M. I. F. '36



*Well Wishers...**Sidney Adler**J. Shelley Applbaum**Lieut. Aaron S. Bell**Zelick Block**Marvin Bloom**Bernard Burack**Helen Caplovitz**Rabbi Abraham Cassel**Joseph Ellenberg**Connie Eskreis**Norma Frank**A Friend**Felix Fuerstein**Leonard Goldstein**James I. Gordon**Morton Gordon**J. Sherwood Green**Haskell Hollander**Abraham Insel**Harold Kanotopsky**Elsie Kovics**Norman L. Krasner**Earl Korchak**Harry Liebb**Allen Mandelbaum**Murray Margolis**Bernard Meer**Rebecca Miller**David Moseson**Joseph Moseson**Macy R. Nulman**Paul Orentlicher**Ruth E. Pearlman**Marvin Pritzker**Solomon Reichel**Myron Reis**Bernard Reiss**Sidney Reiss**Jerome Robbins**Nathan Rosenbaum**Edythe Rosenblatt**Charles Rothblatt**Harry Samson**Paul Schuchalter**Leo Schwartz**Bernard Siegel**Israel Slochowsky**Edith Stein**Herman Tanenbaum**Louis M. Tuchman**Jacob Walker**Charles Weinberg**Florence Yadman**Solomon S. Zeides**Marvin Zerkowitz**Nathan Zemel*

After the show meet the cast at

HARRY'S College Luncheonette

(Across from the Yeshiva)

SODAS • FRAPPES • MALTEDS • HOT DISHS

HARRY KURTZ, Prop.

BRESSLER'S DELICATESSEN

on

ST. NICHOLAS AVENUE
Bet. 182nd and 183rd Streets

Invites you after the play

STRICTLY KOSHER

Support

THE MASMID

YESHIVA COLLEGE YEARBOOK

"THE COMMENTATOR"

The Student's Watchdog

*“All’s
well
that
ends
well”*