



# YU ON THE RISE

PRESIDENT'S REPORT 2023



# YU ON THE RISE

PRESIDENT'S REPORT 2023



3

MESSAGE FROM  
THE PRESIDENT

4

YU FACTS & STATS

7

A YEAR OF RECORD  
ENROLLMENT



13

YU STUDENTS  
ARE LEVELING UP

17

YU GRADUATE  
SCHOOLS

23

FACULTY  
RESEARCH

31

YU GLOBAL

33

OUR FIVE CORE  
TORAH VALUES



41

BUILDING A BETTER  
UNIVERSITY

46

RECORD SUCCESS OF  
RISE UP CAMPAIGN

49

HONOR ROLL  
OF DONORS

To jump to specific sections, please click on the numbers above.

# Message From The President



RABBI DR. ARI BERMAN

Dear Friend,

I am pleased to present our annual President's Report, attesting to the historic rise across our university in 2023. We continue to see substantial growth in enrollment, groundbreaking programing, new and improved facilities and cutting-edge research. This has been an extraordinary year, filled with accomplishments that reflect our status as the world's flagship Jewish university, and that distinguish us in the world of universities.

Bucking all national trends, our enrollment across the university is soaring, with graduate enrollment increasing by nearly 90% during the last seven years and undergraduate enrollment increasing by over 20% from 2021 to 2022, which represents the largest incoming undergraduate class in 20 years. Students are drawn to our university for myriad reasons, including our top-tier faculty, which is internationally recognized for their groundbreaking research.

In these pages, you will also read about our students' success upon graduation, as well as the successes of our Rise Up campaign, which has surpassed \$350 million, more than halfway to our goal of \$613 million, after only being publicly launched last year. Thanks to the generosity of our community, donations were up last year by over 33%, enabling us to increase scholarship programs and make capital improvements across campus.

You will also learn about many of YU's exciting innovations and programs, such as the Katz School's new Security Operations Center, and YU Global, launching

this year, which will prepare the next generation of leaders with cutting-edge certificate programs that open doors to in-demand careers.

These successes are underscored by our five Core Torah Values: Seek Truth (Torat Emet), Discover your Potential (Torat Adam), Live your Values (Torat Chaim), Act with Compassion (Torat Chesed) and Bring Redemption (Torat Tzion). These timeless values drive our institution and ultimately lead our students to live lives of value and impact.

In this edition, I invite you to read about our remarkable students, stellar faculty and devoted alumni who are the heart and soul of Yeshiva University. The value of our world class YU education has never been more important. We look forward to rising even higher and continuing to serve the Jewish community and the broader society, creating a better world for all.

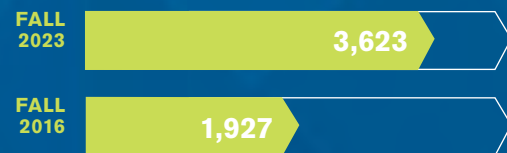
Best Wishes,

Rabbi Dr. Ari Berman

# YU FACTS & STATS

GRADUATE ENROLLMENT INCREASED BY

88%



UNDERGRADUATE ENROLLMENT rose significantly in fall 2022 with a

MORE THAN 20%

increase in new students from fall 2021. That trend has risen further in fall 2023, thanks to a 10 percent increase in applications over last year.

ENROLLMENT FOR THE KATZ SCHOOL OF SCIENCE AND HEALTH HAS SKYROCKETED NEARLY

400%

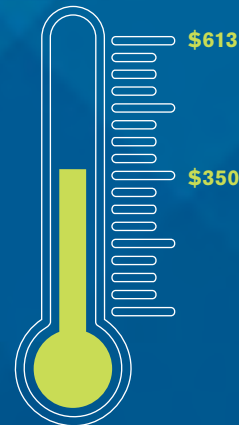
SINCE 2017.



YU FACULTY LAUNCH CUTTING EDGE RESEARCH  
New research grants awarded to YU's faculty increased by

177%

between 2021 and 2023.



RISE UP CAMPAIGN

One year since its public launch, YU HAS RAISED OVER \$350 MILLION toward its goal of

\$613 MILLION.

YU IS CURRENTLY EMBARKING ON

MORE THAN 45

construction and infrastructure improvement projects on campus.



THE PARNES CLINIC AT THE FERKAUF GRADUATE SCHOOL OF PSYCHOLOGY is among the four largest training clinics in the United States; it serves over

600 PATIENTS

at any given time and provides over 1,500 appointments per month.



RIETS EDUCATES THE NEXT GENERATION OF RABBIS.

80%

of all major Modern Orthodox congregations are led by RIETS graduates.

THE CARDOZO LAW SCHOOL INNOCENCE PROJECT directly exonerated over

240 WRONGLY CONVICTED PEOPLE

using DNA testing.

96.9%

OF YU GRADUATING STUDENTS completed up to five internships during their time at YU.



UNDERGRADUATE ACCEPTANCE TO MEDICAL SCHOOL IS DOUBLE THE NATIONAL AVERAGE

91%

of YU undergraduates who applied to medical school earned admission between 2013 and 2023 with 520 applying and 476 accepted.



YU LIBRARIES CONTAIN A WEALTH OF KNOWLEDGE, WITH

634,000

print books, 271,000 electronic books, 323,000 electronic and physical journals and 202,212 linear feet of shelving—almost 38 miles.



YU STUDENTS FIND SUCCESS.

97.6%

of YU undergraduates are employed, in grad school or both within six months of graduation.



# YESHIVA UNIVERSITY

Marks a Year  
of Record  
Enrollment





Yeshiva University closed its academic year with record success — not only in a double-digit increase in enrollment that has continued

through 2023, but with an increased competitiveness for admission: current YU applicants present stronger and more dynamic academic achievements than ever, including honors classes and high GPAs and test scores. These increases — in both quantity and quality — are in striking contrast to a nationwide drop in college enrollment of 8% from 2019 to 2022 — the worst plunge in enrollment ever recorded. Indeed, with a nearly 40% increase in applications to YU from 2020 to 2023, students and parents across the globe are clearly recognizing the unique value of a Yeshiva University education, which combines a world-class yeshiva with a world-class university.

“Everything we do at Yeshiva is to empower our students to find their purpose and higher calling, said Rabbi Dr. Ari Berman, President and Rosh Yeshiva of Yeshiva University. “Our growth in enrollment and philanthropy reflects the belief of our supporters and academic

*Yeshiva University is the proud home of world-class Roshei Yeshiva and Torah educators who regularly interact with and teach undergrads.*

community in our students and their future. We are humbled and honored to serve our community and society by educating the leaders of tomorrow with character and excellence.”

**RISING IN WORLD-CLASS TORAH STUDY**

Central to YU’s stellar student undergraduate experience is the exposure to great Torah faculty. Yeshiva University is the proud home of world-class Roshei Yeshiva and Torah educators who regularly interact with and teach undergrads. The depth and breadth of YU’s Torah faculty is unrivaled; whatever the student’s level of study or area of Judaic interest, there is a warm and caring teacher ready to provide individual attention. This is important for all students but especially for those returning from intensive Torah study in Israel. YU provides them with unique learning and growth opportunities so they can continue to progress in their religious studies and Jewish lives.

**RISING IN EMPLOYER DEMAND AND GRAD SCHOOL ACCEPTANCE**

Employers are taking notice. Graduates are placed in world-class companies, including Amazon, Twitter, Goldman Sachs, J.P. Morgan and Google. In fact, nearly 98% of YU students for whom data is available have reached their destination within six months of graduation, including accepting offers for employment and/or admission to grad schools.

Yeshiva University also launched several new pathway programs into great careers in the medical, allied health,



Rav Hershel Schachter, rosh yeshiva at Rabbi Isaac Elchanan Theological Seminary (RIETS) addresses students at YU’s Glueck beit midrash.

social work, psychology and education fields. Students can complete their undergraduate degree and seamlessly continue to YU’s highly ranked graduate schools while building their credits toward both degrees. This includes a new double admission program in which 10 top honors students are accepted straight out of high school to Albert Einstein College of Medicine. This new YU/Einstein program provides these elite prospects from our communities with the assurance of a premier medical education, including additional research opportunities at Einstein all throughout their undergraduate years.

**RISING IN MULTIGENERATIONAL COMMITMENT**

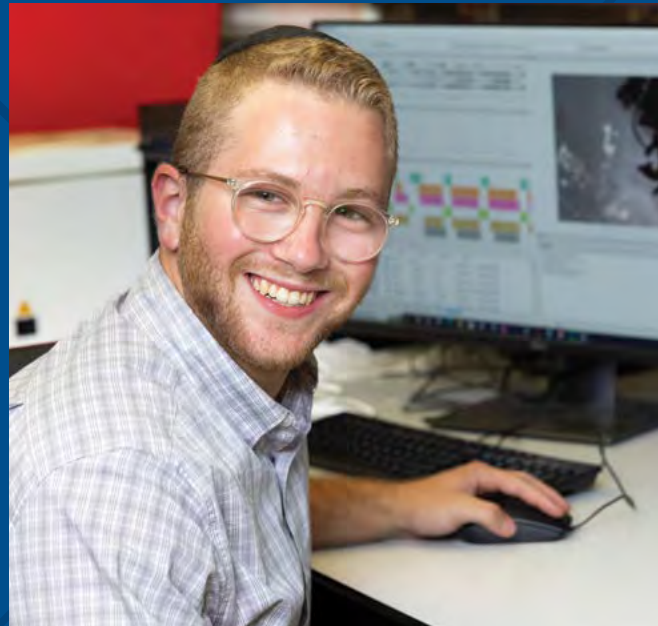
A testament to the fact that graduates — parents and grandparents — have found lifelong success both after and as a direct result of their Yeshiva University education is that YU has one of the highest multigenerational admissions of any university in the country. These alumni not only encourage the next generation to attend YU, but also volunteer to help our students throughout their careers, forming an active YU

network of over 70,000. Our alumni work closely with our newly formed Shevet Glaubach Center for Career Strategy and Professional Development, which offers an extensive range of resources from personalized counseling and career planning to workshops, networking events and first-rate internships.

Thanks to the continued success of the Rise Up Campaign — which has raised over \$350 million toward its \$613 million goal — YU has been able to increase its scholarship programs to ensure greater affordability to its growing student body. Both in value and values, YU presents a priceless educational opportunity that is driving more and more students to make YU their home.

**RISING IN OPPORTUNITY**

Once on campus, undergraduate students take up a rigorous course of study in a wide range of fields, from delving into the Torah and other key texts of Judaism to exploring cutting-edge research in business, entrepreneurship, psychology, pre-medicine, cybersecurity, history and much more.



## SPOTLIGHT ON: SY SYMS SCHOOL OF BUSINESS UNDERGRADUATE PROGRAM

With rising enrollment, Sy Syms is seeing tremendous growth in many areas. Students are increasingly building broader and stronger foundations, further enabling them to develop into Torah-grounded professionals who excel in the workplace and in the community. This year, a record 74% of students chose “duals” — double majoring, double minoring and double majoring+minoring — up from 54% five years ago. New programs include Business Communications, focusing on soft skills; an expansion of the Jewish Values curriculum to include Jewish Public Policy; and the YU Israel Summer Internship program.

THE NUMBER OF STUDENTS  
THAT EMBARK ON DOUBLE MAJORS, MINORS  
OR OTHER ADVANCED COURSE LOADS  
HAS INCREASED BY

54%

IN THE PAST FIVE YEARS

For example, Yeshiva University’s Bachelor’s in Computer Science features an innovative curriculum that is tailored for students to step out of the program and walk into top-shelf jobs in the New Economy, and YU degrees in health-related fields are also highly attractive and a good value to YU’s undergraduates.

Additionally, YU offers a growing number of minors, which help guide students toward the academic course of study that is right for them.

### RISING IN STUDENT LIFE

Warm and welcoming, YU offers an enriching student life that gives students a close-knit sense of community. Over 150 student-run organizations and clubs provide opportunities to get involved in politics, Holocaust education, journalism, medical ethics, music, the arts and many other extracurricular activities. Holiday events and Shabbat programming bring hundreds of students together in an inspirational community setting of shared values as they enjoy great food, thought-provoking speakers, profound discussions and new friends, while creating memories that will last a lifetime.

### THE FLAGSHIP JEWISH UNIVERSITY

Together with world-class academics, vibrant student life and impactful career services, YU is the most effective bridge to students’ future lives of enormous professional and personal success.

“Parents are recognizing that a Jewish education and a Jewish environment are vital as young people forge their identity as adults,” said Geri Mansdorf, Assistant Vice President of Enrollment. “These are formative years, and the environment that a person has in their college years is extraordinarily impactful to who they become as an adult. Also, with growing antisemitism both here and abroad, there is a desire to come closer to the Jewish community, and for their children to be in a safe place.”

A YU education opens doors to success, while helping students ground their study in Core Torah Values and become intellectually curious innovators — deeply rooted in a 3,000-year-old heritage infused with meaning — who are changing the world for the better. The value of a YU education has never been clearer, and a record number of new students are poised to discover what makes YU the flagship Jewish university.

“There is no equivalent to YU,” said Mansdorf. “No other university combines a world-class college education with a world-class yeshiva, complete with a deep support network, vibrant social activities, and rich campus life for our community of shomrei Torah and mitzvot. The world is open to you at YU.” ■

*Both in value and values, YU presents a priceless educational opportunity that is driving more and more students to make YU their home.*

*“There is no equivalent to YU. No other university combines a world-class college education with a world-class yeshiva, complete with a deep support network, vibrant social activities, and rich campus life for our community of shomrei Torah and mitzvot.”*

**GERI MANSDORF**  
Assistant Vice President of Enrollment





SHEVET GLAUBACH CENTER  
FOR CAREER STRATEGY AND  
PROFESSIONAL DEVELOPMENT

# YU STUDENTS LEVELLING UP



**Graduates  
are Finding  
Extraordinary  
Success**





Yeshiva University is showing results that put it way ahead of the pack. YU grads have a near perfect record of employment or graduate school

acceptance within six months of graduation, giving it one of the highest success rates for students entering the job market in the nation. This is in comparison to worrying national trends where about 53% of new college graduates across the country are either unemployed or underemployed.

This success is a direct result of vital resources and support provided by YU, most importantly the Shevet Glaubach Center for Career Strategy and Professional Development, which acts as a campus hub of resources, opportunities and hands-on assistance that drives our students' success. YU students benefit from career development and guidance, with staff taking a personal interest in their dreams, hopes and aspirations far beyond

*The Shevet Glaubach Center for Career Strategy and Professional Development at Yeshiva University stands as a beacon of support for students as they navigate their career journeys.*



*YU alumnus Barry Aranoff, audit partner at Shanholt Glassman Klein Kramer & Co. greets a student at the Shevet Glaubach Center's Finance and Accounting Fair.*

the boundaries of their undergraduate curriculum. Supported by a network of 70,000 alumni, YU students leave the University ready to embark on lives of great personal and professional success, becoming the leaders of tomorrow who contribute to the betterment of our world.

#### NETWORKING FOR SUCCESS

In addition to resume reviews, assistance with personal statements, mock interviews and industry-focused recruiting events, the Shevet Glaubach Center offers curated resources and advisors by industry. This enables students to connect with clubs, alumni and faculty, as well as internships and jobs that are specific to the career they wish to pursue. This unique model is called "Connections and Partnerships for Success," or CAPS for short.

Networking plays a pivotal role in our students' success. Our inaugural young alumni mentoring program, "The Thirty," partners new graduating students with alumni under the age of 30 who are working in their respective

fields, forming connections that help new grads on their road to corporate success. Piloted in the spring of 2022, the inaugural cohort paired nine graduating seniors with nine alumni. In 2023, the program had a 122% increase in participation with 20 graduate-alumni pairings, while four of the prior cohort's mentees transitioned to mentors. Moreover, YU-MVP — a mentoring network of over 1,300 alumni across industries — helps prepare students for interviews and provides industry-specific career advice. The number of students actively participating in YU-MVP has risen in one year from 670 to 944.

#### IMPRESSIVE PLACEMENT RATES

It is no surprise that with the support of successful alumni, graduates' successful placement in either a job or graduate school of their choice increased 2% from the already impressive 95.5% placement rate from the Class of 2021. About one-third of the employment offers originated from internship conversions, with 97% of our graduating students having completed up to five internships during their time at YU.

# 97.6%

**OF ALL YU GRADUATES LAND A JOB OR ATTEND GRADUATE SCHOOL WITHIN SIX MONTHS AFTER GRADUATION**

In the Class of 2023, those students pursuing graduate school were most interested in social work, law, nursing/allied health, medicine and consulting (as compared to the class of 2021, where education was the top graduate field of interest, followed by accounting and then finance). Notably, social work was not in the top five one year prior, which may be representative of our students' responsiveness to the nation's mental health crisis following the pandemic.

#### UNPRECEDENTED OPPORTUNITIES

In academic year 2022–2023, the transformational gift from the Glaubach family created opportunities for students to attend professional conferences, receive stipends for non-paid internships and send students to national competitions to compete against students from other top-tier universities in areas such as finance and technology.

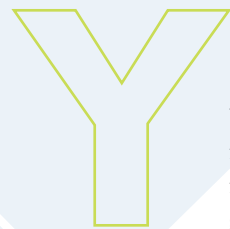
The Shevet Glaubach Center for Career Strategy and Professional Development at Yeshiva University stands as a beacon of support for students as they navigate their career journeys. Through its unique focus on student interests and aptitudes, personalized resources and strong alumni network, the center empowers students to explore diverse career paths and build meaningful connections. With data-driven strategies and a community-oriented approach, the center continues to foster success, impressive placement rates and the freedom to pursue new fields of interest. ■



# YU GRADUATE SCHOOLS

Experience  
Explosive Growth





YU's graduate enrollment surged in fall 2023, increasing by at least 13% from fall 2022, the highest rate of growth on record — driven by a huge rise in applications year over year. These increases continue a massive upward trend in recent years: YU has seen an 88% rise in graduate enrollment between 2016 and 2023 in contrast to a mere 6% national growth in graduate school enrollment between 2010 and 2020. In fact, between 2021 and 2022, national graduate enrollment actually declined.

With over 25 new cutting-edge graduate school programs ranging from Artificial Intelligence to Biotechnology, Yeshiva University continues to solidify its status as a preeminent academic institution grounded in Core Torah Values, preparing students for rewarding and meaningful careers in today's most sought-after professions.

#### THE KATZ SCHOOL OF SCIENCE AND HEALTH

Now the third largest graduate school at YU, Katz School enrollment has skyrocketed nearly 400% since 2017, over 200% since 2019 and over 50% since 2022. This phenomenal increase is thanks to YU's commitment to creating programs that meet today's educational landscape in STEM and health, providing students with the skill sets necessary to succeed in the most in-demand careers. New master's degree programs include Artificial Intelligence, Biotechnology Management & Entrepreneurship, Cybersecurity and a fully online M.S. in Speech-Language Pathology. Six of its 11 grad programs prepare students for careers that land in the top 10 of *U.S. News & World Report's* 2022 best jobs.

Recognized for its phenomenal success rate, Katz was ranked No. 2 on *Fortune* magazine's list of the best online master's in cybersecurity programs in 2022. In addition, 95% of its graduates land high-wage jobs within six months of graduation, and half are offered jobs before they graduate at companies including Amazon, Meta, Deloitte, Ernst and Young, Google, IBM and JPMorgan Chase.

#### WURZWEILER SCHOOL OF SOCIAL WORK

With enrollment increasing over 30% in the past two years and more than 300% since 2017, Wurzweiler is seeing record growth that shows no signs of slowing down.

Respected across the world for its wide-reaching innovations, Wurzweiler, in partnership with Amudim Israel, opened the Mental Health Therapy Center in Jerusalem to fill a critical need for affordable, English-language mental health services. The center is staffed by Wurzweiler graduate students, recent graduates and other professionals who specialize in a variety of modalities and concentrations.

On the home front, Care Café, Wurzweiler's community-based program providing psychoeducational pop-up support 'cafés' throughout the New York metro area, created a variety of initiatives this year based on the needs of the New York City community. These included a mental health awareness walkathon as well as onsite care for Holocaust survivors and conferences on such subjects as aging support services, which drew members of the Washington Heights community as well as healthcare providers.



Bruce Bryan, right, is pictured with Josh Dubin, Executive Director of The Perlmutter Center for Legal Justice at Cardozo School of Law, following his release. Bryan is the Perlmutter Center's first client and was granted clemency thanks in part to the Center's efforts.

# OVER 240

**WRONGLY IMPRISONED PEOPLE  
HAVE BEEN EXONERATED THROUGH  
THE INNOCENCE PROJECT**

the use of forensic evidence in courts. The Perlmutter Center hosts the Freedom Clinic at Cardozo, working directly with clients on clemency and other cases. Both build on Cardozo's tradition as the birthplace of the Innocence Project, where clinic students have helped in the exoneration of over 240 wrongfully convicted people from prison.

In 2023, the law school and Yeshiva University worked together to provide a safe haven for professor Dr. Dmytro Vovk and his family when their hometown of Kharkiv, located thirty miles from the Russian border, came under attack. This fall, Dr. Vovk will teach Cardozo students about religious freedom and war.

#### FERKAUF GRADUATE SCHOOL OF PSYCHOLOGY

Ferkauf enrollment has increased by almost 25% in the last three years. Always working to meet the evolving needs of today's job market for the communities it serves, Ferkauf will offer a remodeled master's degree program in Psychology in 2023–24.

In 2022, in partnership with Achieve Behavioral Health, Ferkauf launched a new master's degree program in Mental Health Counseling specifically for the Heredi and Chassidic communities.

And in April 2023, Ferkauf professor Dr. Elizabeth Seng's migraine prevention research on mindfulness was featured on CBS News and more than 200 of its affiliated TV and radio stations across the nation.

#### CARDOZO SCHOOL OF LAW

The Benjamin N. Cardozo School of Law continues to attract the highest credentialed students in its history, with a 3.79 average college GPA and LSAT scores of 164. The success is part of a multiyear trend. The graduating class of 2023 saw 91% of students hired into the ranks of top-tier full-time legal jobs as measured by the American Bar Association. In fall 2023, the LL.M master's program in law attracted 70 students from 28 countries, comprising the school's largest LL. M. class ever.

New programs at the law school include the Perlmutter Center for Legal Justice, created with a \$15 million grant, the largest in the law school's history, to train lawyers in



## RABBI ISAAC ELCHANAN THEOLOGICAL SEMINARY (RIETS)

The Rabbi Isaac Elchanan Theological Seminary (RIETS) is the Western Hemisphere's leading center for Torah learning and for the training of the rabbinate. For over a century, it has provided an unsurpassed educational experience in the classic mold of the great yeshivot.

More than 3,000 of the world's most distinguished Orthodox rabbis, scholars and teachers have been trained there, and 80% of all major Orthodox congregations are led by the school's alumni. On October 29, 2023, the YU community will celebrate Chag HaSemikhah 5784, when 130 newly ordained rabbinic graduates will join the illustrious community of RIETS alumni worldwide.

In an increasingly complex world, RIETS accepts the challenge of preparing its students to face the multifarious issues of today's society and has developed programs to meet the communal and personal needs of our time and place. New among them are its pastoral counseling graduate program, offered jointly with YU's Ferkauf Graduate School of Psychology, a certificate in Jewish Bioethics and a master's degree in Hebrew Literature.

### SY SYMS SCHOOL OF BUSINESS

Enrollment continues to rise along with the addition of exciting new programming, new master's degrees and partnerships with other YU schools.

Completing its second year, enrollment in the Syms online MBA program more than doubled from 2021–22 and is expected to grow by a further 50% in the 2023–24 year. In the works is a Real Estate concentration that will leverage the core courses from the Mitzner MS in Real Estate program.

A new Semikha+MBA program with RIETS is also debuting in the 2023–24 academic year, while a new Non-Profit Leadership elective is slated to debut in early 2024 and may grow into a concentration; more high-demand concentrations are on the way.

Also, completing its second year, enrollment in the online MS in Accounting program grew 50%, which included growth in the number of undergraduate Accounting students continuing into the MS program via our BS/MS Pathway. A new taxation track will soon be added to the program.

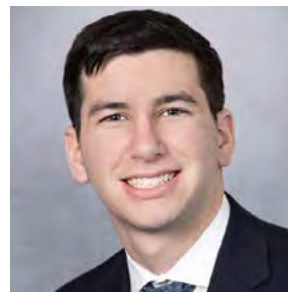
### ALBERT EINSTEIN COLLEGE OF MEDICINE

Yeshiva University Honors Programs and the Albert Einstein College of Medicine enthusiastically announce a new partnership that provides a select number of exceptional high school seniors early assurance to an honors undergraduate education and medical school training.

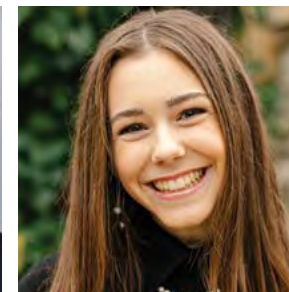
High school senior applicants with a demonstrable interest in medicine who are certain that medicine is the lifetime career they want to pursue are encouraged to apply.

This year's cohort of only 10 students from across the country include Aaron Sisser, Yeshiva University High School for Boys' 2023 valedictorian and Rivka Sullivan, Yeshiva University High School for Girls (Central) 2023 salutatorian.

During their expected time at YU, these exceptional students and their program peers will be encouraged to explore a wide range of Yeshiva liberal arts and sciences



Aaron Sisser



Rivka Sullivan

majors in order to acquire a broad-based education that can be applied to the study of modern medical science.

### BERNARD REVEL GRADUATE SCHOOL OF JEWISH STUDIES

Revel continues to see strong growth in enrollment, increasing its student body by 96% since 2016 and developing a range of cutting-edge initiatives. Meeting the demand for rigorous but accessible coursework, Revel has created a program in partnership with the Philos Project, a nonprofit organization that promotes positive Christian engagement with Judaism. The students will learn Hebrew, Jewish thought, and history from a Jewish perspective.

Graduates of the one-year program will earn a master's degree in Jewish Studies from YU and a certificate in Hebraic Studies from the Philos Project.

### AZRIELI GRADUATE SCHOOL OF JEWISH EDUCATION & ADMINISTRATION

Attracting Jewish educators and aspiring educators from around the world, Azrieli graduated a special cohort of master's degree students from South Africa in 2022–23, recruited as part of a partnership with various South African Jewish educational organizations.

For the second year in a row, Azrieli received a grant from the Mayberg Foundation for its innovative On The Move professional development program that uses technology to bring participants into innovative classrooms across the country. The program has been so successful, it is currently being adapted as an Azrieli elective course.

Recognizing the critical need for Jewish educators worldwide, Azrieli partnered with RIETS in the development of the Chinuch Incubator – a program designed to identify and guide potential Jewish educators at both the high school and college level. One Chinuch Incubator program, the MaTTEACH fellowship, grew from serving 20 students to engaging over 50 in various models of teaching in day school settings.

### THE EMIL A. AND JENNY FISH CENTER FOR HOLOCAUST & GENOCIDE STUDIES: MORE FIRSTS

The Fish Center for Holocaust & Genocide Studies started a new Advanced Certificate in Holocaust Education, a first-of-its kind program uniquely designed for public and private school educators, administrators and librarians in grades 6–12 who seek effective, age-appropriate methods and materials for teaching about the Holocaust.

### THE GRADUATE PROGRAM FOR ADVANCED TALMUDIC STUDIES FOR WOMEN (GPATS)

Since 2016, enrollment has doubled in GPATS, providing women with an exceptional level of Torah and Talmudic learning. Building on its success and responding to demand, GPATS has added a third-year track, as well as a new online "Inside the Beit Midrash" series of faculty teaching online courses. In 2022, GPATS also added a fast-growing Scholars-in-Training Shabbaton program, bringing the women of GPATS to share their Torah at 12 communities near and far.

A new incubator fund from Micah Philanthropies will fund three teaching projects of current students, in which they will be running two summer learning programs and a Washington Heights Beit Midrash.

Rooted in the timeless and transcendent principles of the Torah and led by a world-renowned faculty, a graduate education at YU uniquely qualifies students to become experts in their fields and the leaders of the future. ■



# FACULTY RESEARCH

Thrives  
at YU





*Dr. Honggang Wang, an expert in artificial intelligence and its applications to digital health, 5G/6G communications and cybersecurity, has been named founding chair of Computer Science and Engineering at the Katz School.*



Yeshiva University fosters a vibrant research culture. At its cornerstone sits a reputation for academic excellence, creativity and ingenuity.

Funding powerhouses like the National Science Foundation (NSF) and the National Institutes of Health (NIH) alongside private organizations like W.M. Keck Foundation and the Simons Foundation have taken notice by generously supporting research spanning the sciences to the humanities.

Jennifer Kinney, Associate Dean of Research, notes that from 2021 to 2023 new research grants awarded to YU's faculty increased by 177%, with new awards now standing at \$4,242,324 in 2023, up from \$1,531,188 in 2021. Galvanizing YU's research efforts, Kinney works closely with YU faculty to obtain the funding they need for their research and scholarship.

"We are proud that with each passing year, the University has witnessed a remarkable upswing in the securing of research grants," said Kinney. "It enables our faculty members to embark on groundbreaking endeavors that push the boundaries of knowledge and advance their respective fields."

Fostering a rich research culture also brings benefits beyond just money. By collaborating with faculty working at the leading edge of their fields, YU students can develop a deep understanding of foundational and advanced subjects that help them prepare for their own successful careers. A case in point is Samuel Akingbade, a Ph.D. candidate at the Katz School of Science and Health, who, with the help of an NSF grant awarded to

Dr. Marian Gidea, Dr. Edward Belbruno and Dr. Pablo Roldan, is exploring how to harvest energy from small amounts of vibration in human and natural activity.

YU's vital research culture also attracts top-tier talent. For example, Dr. Honggang Wang, an expert in artificial intelligence and its applications to digital health, 5G/6G communications and cybersecurity, has been named founding chair of Computer Science and Engineering at the Katz School. His expertise and previous research grants totaling over \$5 million from the NSF, NIH and the U.S. Department of Transportation make him a valuable addition to YU's faculty.

Yeshiva University's commitment to research drives innovation, advances knowledge and promotes robust student engagement, all of which generate the new insights and transformative knowledge needed to improve the present and prepare for the future. "The flourishing of research at Yeshiva University is a testament to the exceptional quality of the faculty, the institution's continuous pursuit of excellence, and its profound impact on the wider world," said Dr. Selma Botman, Provost and Vice President for Academic Affairs.

Here is a look at the different types of research currently being conducted by faculty members, highlighting the University's commitment to innovation and scholarship.

*"The flourishing of research at Yeshiva University is a testament to the exceptional quality of the faculty, the institution's continuous pursuit of excellence, and its profound impact on the wider world."*

**DR. SELMA BOTMAN**  
Provost and Vice President for Academic Affairs



**DR. ELIZABETH SENG, PH.D.**

Associate Professor, Ferkauf Graduate School of Psychology; Research Associate Professor, Saul R. Korey Department of Neurology, Albert Einstein College of Medicine; Deputy Director of the Headache Centers of Excellence Research and Evaluation Center, VA Connecticut Healthcare Systems



Migraine, the second leading cause of disability in the world, affects 40 million people in the United States. Dr. Elizabeth Seng’s groundbreaking research with Ferkauf doctoral students focuses on understanding the psychosocial factors associated with migraine attacks and migraine-related disability. At the Headache and Adherence Lab at Ferkauf, researchers explore the use of mindfulness-based cognitive-behavioral therapy (MCBT) through digital technologies to provide targeted behavioral and lifestyle strategies for managing the conditions.

In recognition of her work, Dr. Seng received the prestigious Seymour Solomon Lecture Award from the American Headache Society in 2023, a highlighted lecture at the Annual Scientific Meeting that provides an update on a topic of clinical importance to healthcare professionals.

**LIVE GRANTS**

Dr. Seng has personally received more than \$1 million in research grants and support from the NIH, the American Heart Association and Veterans Affairs. These include:

**FEASIBILITY AND ACCEPTABILITY OF TELEPHONE-DELIVERED MBCT FOR MIGRAINE AND DEPRESSION**

**GRANT AGENCY**  
National Institutes of Health: National Center for Complementary and Integrative Health

**PROJECT PERIOD**  
6/1/2021–5/30/2025

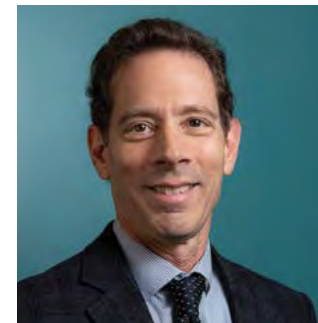
**AMOUNT AWARDED**  
\$435,810

**MIGRAINE AS A RISK FACTOR FOR CARDIOVASCULAR EVENTS IN THE VETERANS HEALTH ADMINISTRATION**

**GRANT AGENCY**  
American Heart Association

**PROJECT PERIOD**  
7/1/2023–6/30/2025

**AMOUNT AWARDED**  
\$299,960



**DR. ROEE HOLTZER, PH.D.**

Professor, Ferkauf Graduate School of Psychology; Professor, Saul R. Korey Department of Neurology, Albert Einstein College of Medicine

Dr. Roe Holtzer, an expert in cognition and motor function of older adults, conducts research on the cognitive and brain predictors of mobility in both aging and diseased populations. “Individuals who walk poorly are at greater risk of developing dementia, disability, frailty and are even at a greater risk of mortality,” noted Dr. Holtzer.

Using innovative interdisciplinary technologies, he measures cognitive and brain function during active walking in older adults and patients with HIV and multiple sclerosis. His research reveals how to improve mobility and reduce adverse outcomes, offering possible remedies to a society with a growing aging population.

**LIVE GRANTS**

Through 2019 to 2022, Dr. Holtzer and his collaborators collectively have received more than \$8 million in research grants from the NIH. In terms of training the next generation of clinical psychologists and neuropsychologists in research, he currently has 53 peer-reviewed publications with students from his Neuropsychology Cognition and Mobility Lab; most of these publications have used data from his previous and current NIH grants.

**CENTRAL CONTROL AND NEUROINFLAMMATORY MECHANISMS OF LOCOMOTION IN OLDER ADULTS WITH HIV**

**GRANT AGENCY**  
National Institutes of Health: National Institute of Neurological Disorders and Stroke

**PROJECT PERIOD**  
12/21–11/27

**AMOUNT AWARDED**  
\$4,063,044

**ASSESSMENT OF COGNITIVE DECLINE USING MULTIMODAL NEUROIMAGING WITH EMBEDDED ARTIFICIAL INTELLIGENCE**

**GRANT AGENCY**  
National Institutes of Health: National Institute on Aging

**PROJECT PERIOD**  
9/22–9/26

**AMOUNT AWARDED**  
\$1,171,812

**BRAIN PREDICTORS OF MOBILITY AND FALLS IN OLDER ADULTS WITH MULTIPLE SCLEROSIS**

**GRANT AGENCY**  
National Institutes of Health: National Institute of Neurological Disorders and Stroke

**PROJECT PERIOD**  
3/19–2/24

**AMOUNT AWARDED**  
\$3,400,889





**DR. EMIL PRODAN, PH.D.**  
 Professor of Physics, Stern College for Women; Director of Mathematics Program, Katz School of Science and Health

Dr. Emil Prodan is an award-winning scientist specializing in the dynamics of complex systems at the intersection of physics and mathematics. His work involves developing mathematical models to analyze the interactions, relationships, patterns and mechanisms between system components in order to predict behavior, understand emergent properties and

optimize system performance. His work has wide-ranging practical applications in such fields as engineering, biology, environmental science and economics.

“In theoretical physics and mathematics,” said Dr. Prodan, “you don’t need a hospital, or a medical school, or a big lab; you just need an idea and the ability to prove it on a piece of paper, and suddenly you can show the world something they have never seen.”

In 2016, Dr. Prodan was the member of a joint Yeshiva University-New Jersey Institute of Technology (NJIT) team that received \$1 million over three years from the W.M. Keck Foundation for a pioneering biophysics research project on “Topological Phonons” – vibrational energy confined to the surface or edge of a material. His most recent grant, funded by the U.S. Army, focuses on practical quantum computing.

*By collaborating with faculty working at the leading edge of their fields, YU students can develop a deep understanding of foundational and advanced subjects.*



**LIVE GRANTS**

**TOPOLOGICAL APERIODIC MATERIALS AND META-MATERIALS**

GRANT AGENCY  
 National Science Foundation

PROJECT PERIOD  
 2019–2024

AMOUNT AWARDED  
 \$378,000

**COLLABORATIVE RESEARCH**

**TOPOLOGICAL DYNAMICS OF HYPERBOLIC AND FRACTAL LATTICES** [part of a large collaborative grant with U Colorado Boulder and NJIT]

GRANT AGENCY  
 National Science Foundation

PROJECT PERIOD  
 2021–2024

AMOUNT AWARDED  
 \$277,958

**TOPOLOGICAL PHASES IN EXTREME APERIODIC AND CORRELATED REGIMES: A VIEW FROM NONCOMMUTATIVE GEOMETRY**

GRANT AGENCY  
 Army Research Lab

PROJECT PERIOD  
 2023–2026

AMOUNT AWARDED  
 \$355,271



**DR. MARGARITA VIGODNER PH.D.**  
 Associate Professor of Biology, Stern College for Women

Dr. Margarita Vigodner, a prominent researcher on male infertility and reproductive health, has secured multiple federal grants to pursue cutting-edge research because, she noted, “there could be hundreds of causes of male infertility, and the more we understand this process, the closer we are to treating it.”

Her involvement of students in the research is a crucial component of these grants: more than 70 undergraduates and 15 honors students have been trained in her laboratory over the past 15 years. Currently, 22 undergraduates and four postdoctoral fellows from her lab are co-authors of studies published in professional journals. Continuously supported by the NIH’s National Institute of Child Health and Development, her research holds promise for future breakthroughs.

*Dr. Vigodner’s involvement of students in the research is a crucial component of these grants: more than 70 undergraduates and 15 honors students have been trained in her laboratory over the past 15 years.*

**LIVE GRANTS**

In 2023, Dr. Vigodner was awarded a prestigious three-year grant for \$450,000 from the Eunice Kennedy Shriver National Institute of Child Health and Human Development, a part of the National Institutes of Health (NIH). This is her third NIH grant at YU.





**DR. MARGARET SALA, PH.D.**

Assistant Professor, Ferkauf Graduate School of Psychology

Eating disorders (EDs) are highly lethal mental disorders, ranking second only to opioid abuse in terms of mortality rates. Over 28.8 million Americans suffer from them, yet only 20% have access to available and affordable treatment. These sobering statistics spur the research of Dr. Margaret Sala, which focuses on using mindfulness to alleviate these potentially fatal disorders.

In March 2023, Dr. Sala, an assistant professor in Ferkauf’s Clinical Psychology Program, secured her first NIH grant, which will provide about \$800,000 in funding over five years. Her project uses digital technology to integrate cognitive behavioral therapy with mindfulness meditation to target binge eating disorder, a common yet rarely discussed ED.

“Being able to access treatment early and easily is the biggest predictor of recovery,” said Dr. Sala. “This pilot research project will be an important first step in helping people with EDs get the care they need.” ■

**LIVE GRANTS**

**DIGITAL MINDFULNESS MEDITATION-ENHANCED COGNITIVE BEHAVIORAL THERAPY (CBT-MM) FOR BINGE EATING**

GRANT AGENCY  
National Institutes of Health: National Center for Complementary and Integrative Health

PROJECT PERIOD  
2023–2026

AMOUNT AWARDED  
\$769,151

# SPOTLIGHT ON FUTURE GROWTH OPPORTUNITIES: YU GLOBAL

Developing the future leaders of an ever-evolving world, YU Global opens doors to the most high-demand professions. Launching this year, YU Global offers a range of certificates and short courses in fields like cybersecurity and software engineering, as well as artificial intelligence and its application to fields like accounting, real estate and digital marketing. YU Global also offers certificates for those looking to enter the paralegal profession, construction management, digital marketing and sales, and web design. By providing cutting-edge, career-focused training, YU Global unlocks learner potential for anyone looking for a job, a career, a promotion or even a new professional path.

“Each program has been created based on well-researched job-market trends showing that the need for trained labor in these fields is growing,” said Danielle Wozniak, Vice President for Global Initiatives and Business Strategies. “There are high paying jobs available and YU Global offers the skills and coaching necessary for participants to succeed — at any point in a career trajectory.”

Students can earn YU Global’s employment-focused certificates instead of, or in addition to, traditional higher education degrees. Developed and taught by industry-leading experts aligned with YU’s first-class educational standards, each certificate delivers advanced industry knowledge while cultivating essential soft skills such as communication, critical thinking, problem-solving and teamwork.

And as the speed of technological innovation outpaces the knowledge base of traditional education, YU Global fills an essential need. In today’s rapidly evolving world, affordable, quickly acquired, real-world, and readily available training — taught by a cadre of world-class experts — is more imperative and important than ever.

Research shows that the average worker will change careers between five and six times over the course of their



*Danielle Wozniak, Vice President for Global Initiatives and Business Strategies*

working life. Not five to six jobs, but five to six careers. YU Global is there to help people pivot into a new career or launch their first one.

YU Global also offers hands-on career services and coaching for resume writing, interview skills and job searches. In addition to providing individuals with career-advancing skills, YU Global will be the premier destination for businesses looking for highly qualified, forward-thinking employees with up-to-the-minute knowledge of today’s cutting-edge fields.

“We are ushering in a new paradigm in higher education by expanding Yeshiva University’s role in all communities and thereby changing the model of what higher education is and can be to people,” Dean Wozniak said. “While we encourage anyone who wants a traditional degree to get one, we also understand that not everyone chooses that path. And no matter what your path or life circumstance, YU Global is there to help you find your way to a fulfilling career.”



# OUR FIVE CORE TORRAH VALUES

Their Impact on  
YU and the Wider  
Community





As we train the next generation of educators, rabbis, health workers and value-driven leaders of industry dedicated to uplifting and improving humanity, we are exceptionally proud of the YU community members who continue to make significant contributions in the areas of science, medicine, civil rights, charity, criminal justice and a host of other industries and enterprises. Our Core Torah Values are at the heart of the Yeshiva University mission and vision, informing every action, initiative and program.

### TORAT EMET / SEEK TRUTH

At YU, we are always looking for ways to foster knowledge as well as impart the lessons of history and our sacred Jewish values to educate and launch research that uplifts humanity.

#### Maimonides Comes to the YU Museum

Yeshiva University Museum's exhibition, "The Golden Path: Maimonides Across Eight Centuries," opened in May, showcasing the life and influence of the great Jewish scholar. The exhibition includes an unprecedented array of Maimonides' manuscripts and documents, some written in his own hand and some rarely seen by the public.

#### Celebrating an Ancient People

In September, "The Samaritans: A Biblical People" opened at the Museum of the Bible in Washington D.C. Created in partnership with the YU Center for Israel



Rabbi Dr. Ari Berman views books signed by Maimonides himself at the exhibition on the great sage at the YU Museum.



In February 2023, YU held the Dor L'Dor Learning Program, which saw approximately 200 students and their fathers and grandfathers take part in morning seder and shiurim, showcasing the positive impact of Torah learning across generations and providing a meaningful experience for YU families.

At YU, we are always looking for ways to foster knowledge as well as impart the lessons of history and our sacred Jewish values to educate and launch research that uplifts humanity.

### TORAT CHAIM / LIVE YOUR VALUES

As the world's flagship Jewish university, we don't just talk about values, we live them and instill them in everything we do. YU's entire curriculum is infused with life-guiding values for each student to incorporate into their personal and professional path so they can live lives of meaning and purpose.

#### YU Hosts IDF Col. Golan Vach

YU's Undergraduate Torah Studies (UTS) hosted IDF Col. Golan Vach, head of Israel's Elite Search and Rescue Unit, for an inspirational Shabbaton attended by more than 100 students. Vach discussed the impact life-changing careers in public service and humanitarian work can have and shared stories of the many rescue missions he has led globally, including responding to the 2021 Surfside condominium collapse in Florida.

#### Dor L'Dor Yeshiva Learning Program Draws Close to 200 Parents to YU Batei Midrash

Undergraduate Torah Studies (UTS) hosted the Dor L'Dor Yeshiva Learning Program on Presidents' Day in February 2023, which provided parents with the opportunity to join their child's morning seder and shiurim in all four UTS programs. Close to 200 parents and grandparents, from various locations in the US, Canada and Europe, came to YU's uptown campus for a day of learning and inspiration.

Studies, under the direction of Dr. Steven Fine, it is the first exhibition that provides unprecedented access to the life, culture and history of the Samaritans, a 2,000-year-old community with deep connections to the Bible. As part of the opening events, Isaac Herzog, President of Israel, expressed his thanks via video to the event's organizers and to the "many minds and hands that have come together to bring this exhibition to life and the story of this special community."

#### Exploring the Secrets of Space

In a YU-hosted panel, "Unlocking the Mysteries of Space," experts discussed the revelations and ramifications of recent images captured by NASA's James Webb Space Telescope — the largest space observatory ever built. The panel was introduced by Dr. Selma Botman, provost and vice president of academic affairs, moderated by Dr. Edward Belbruno and saw discussions with Dr. Marian Gidea along with Dr. James Green, former chief scientist at NASA, and Dr. Michael Strauss of Princeton.



*YU undergraduates traveled throughout Morocco visiting Jewish heritage sites and giving back to the local community, including making repairs to tombstones in a Jewish cemetery.*

**Syms Celebrates its 36th Anniversary**

Throughout 2023, the Sy Syms School of Business is celebrating its “Double Chai” anniversary with a yearlong celebration highlighting the “Best of Syms” with monthly themed events. Themes included the school’s Jewish Values Curriculum, Entrepreneurship and Innovation, the school’s Honors Program, and Star Students and Alumni. Fall 2023 semester includes Torah U’Business, Finance and Real Estate, Israel Initiatives and the Sy Syms Annual Shabbaton planned for December.

**Record-Breaking Crowds at the 2023 Sarachek Basketball Invitational**

Set at YU from March 23–27, the 30th annual Red Sarachek Invitational Basketball Tournament welcomed 24 yeshiva high school basketball teams from across the United States and Canada to compete for the top spot in North America’s most prestigious Jewish high school basketball competition. The championship game attracted over 800 spectators to the Max Stern Athletic Center, with an additional 200 fans gathering at an outdoor viewing party featuring a high-tech digital broadcast truck in the heart of the Wilf campus.

**TORAT ADAM / DISCOVER YOUR POTENTIAL**

Every person is created in God’s image, and at YU, we recognize each individual’s inherent worth and encourage our students to grow and discover their full potential.

**YU Students Experience Morocco**

As part of YU’s “Global Citizenship 2023,” over 30 participants spent a week in Morocco exploring Jewish heritage sites, befriending Moroccan Jews, praying at the gravesites of great rabbis, repairing tombstones in the Jewish cemetery, building bridges with Muslim university students and more. Accompanying the group was Rabbi Dr. Ari Berman, President, Yeshiva University; Dr. Erica Brown, Vice Provost for Values and Leadership; Rabbi Ari Rockoff, David Mitzner Community Dean for Values and Leadership; and Terri and Andrew Herenstein, founders of the Rabbi Lord Jonathan Sacks-Herenstein Center for Values and Leadership.

**YU Opens Advanced Cyber Center**

In March, YU’s Katz School of Science and Health opened the Security Operations Center to provide hands-on cybersecurity training to students. The first of its kind in New York City, the center provides advanced simulations so students can gain real-world experience in countering multiple attack vectors, managing a virtual enterprise network and working with commercial grade security tools.



*YU’s annual YUNMUN brought together 370 high school delegates for a 3-day event in Stamford, CT.*

**From Terrorism to Climate Change, Young Diplomats Take on YU Model UN**

YU hosted the 33rd annual National Model United Nations (YUNMUN) event, which brought together 370 high school delegates from 42 schools from the U.S., Brazil, Canada and Israel. The three-day competition featured simulated U.N. committee debates and provided an opportunity for students to develop their debating skills while gaining insight into the importance of international diplomacy.

**TORAT TZION / BRING REDEMPTION**

We find ourselves in an imperfect world, yet striving to heal, uplift and transform our world is what gives our lives meaning and purpose. From supporting Israel and the rights of the marginalized to discovering medical and scientific breakthroughs that promote the greater good, YU’s students, faculty, staff and our entire community are committed to creating a peaceful, just and bountiful future for us all.

**YU Makes History in Dubai**

YU launched an historic Jewish studies conference at the Crossroads of Civilizations Museum in Dubai in May, which generated significant positive media attention.

Presented in partnership with the Bernard Revel Graduate School, Rabbi Arthur Schneier Program for International Affairs and the Straus Center, the symposium strengthened ties between YU and the United Arab Emirates and fostered dialogue between Jews and Muslims in the Middle East.

**Nosotros@YU**

In September, YU gathered with its Washington Heights neighbors for an evening of art and Sephardic music at Nosotros@YU, a unique art exhibition highlighting the connection between Jewish and Latino culture and history. Organized by YU’s Rabbi Arthur Schneier Program for International Affairs and curated with the support of the Philos Project, the event drew an impressive group of community leaders including Congressman Adriano Espaillat (NY-13), Manhattan Borough President Mark Levine, New York State Sen. Robert Jackson (D-31) and New York State Assemblymember Manny De Los Santos (D-72).

**Torah Tours® Return**

After a three-year hiatus, the Aaron and Blanche Schreiber Torah Tours® Program sent more than 100 undergraduates to 24 communities to enliven the Simchat Torah holiday. Participating students spread enthusiasm, Torah knowledge, energy and passion across North America, forming partnerships that will last far beyond the holiday.

**OVER  
100**

**UNDERGRADUATES TOOK PART IN  
THE AARON AND BLANCHE SCHREIBER  
TORAH TOURS® PROGRAM**

**TORAT CHESED / ACT WITH COMPASSION**

Humanity has a shared responsibility to support each other and help those in need. YU is proud to offer many initiatives, programs and opportunities inside and outside the classroom that inspire everyone in our community to help the less fortunate and, through each act of kindness and compassion, change lives for the better.

**Afghan Scholar Finds Refuge at YU**

Dr. Mariam Ahmady, the former chair of the counseling psychology department, psychology and educational sciences at Kabul University, fled Afghanistan and found refuge at Yeshiva University. Arriving in New York in early November 2022 after an arduous departure from her home country, Dr. Ahmady was awarded the position of visiting professor at Stern College for Women. Her teaching fellowship at YU has been generously funded by private donors who choose to remain anonymous.

**Stomp Out the Stigma**

Active Minds and the YU Counseling Center organized the annual Stomp Out the Stigma event in April at Lamport Auditorium. The program aims to destigmatize mental illness and featured three YU undergrads who have bravely overcome mental health challenges. With over 400 attendees, the program remains one of the most inspiring and powerful events on campus, emphasizing compassion and unity.

**Addressing Domestic Violence**

In recognition of Domestic Violence Awareness Month and as part of its Community Safety series, Care Café, in conjunction with the Long Live Our Butterfly organization, hosted a self-defense workshop at the Drip Sweat Gym in Washington Heights in October. Joining the event was New York State Assemblymember Manny De Los Santos (D-72). Care Café continued its community outreach efforts with a winter coat and clothing drive. Donations were distributed to its local community partners.

**YU Opens Therapy Center in Jerusalem**

In fall 2022, the Wurzweiler School of Social Work, along with Amudim Israel, opened the Jerusalem Mental Health Therapy Center. Staffed by Wurzweiler graduate students and other professionals specializing in addiction, anxiety and trauma, the Center offers mental health counseling to English speakers, gap-year students, new immigrants, soldiers with PTSD and others adjusting to life in Israel. ■

*In the coming year, as YU continues to be guided by the Five Core Torah Values, we look forward to rising even higher, serving the Jewish community and the broader society, and creating a better world for all.*



**CORE TORAH VALUES INSPIRE A LIFE OF WISDOM, CONTRIBUTION, AND PURPOSE**

Elucidating and illuminating YU's Five Core Torah Values on both an individual and communal level, Rabbi Dr. Ari Berman, President of Yeshiva University launched his new book, *The Final Exam: Letters to our Students*, in February.

In the book, Rabbi Berman presents the Core Torah Values that inspire a life of wisdom, contribution and purpose through the powerful medium of personal letters. With penetrating analysis of core texts, the wisdom of his

own teachers and stories of his journey through and to Yeshiva University, Rabbi Berman honors Torah U-Madda as an educational philosophy while expanding it into a worldview that also embraces truth, dignity and compassion. He encourages his readers to integrate these values into a life of faith and religious integrity that sets as its goal a path to redemption.

The book launch took place during the Seforim Sale and included an interview with Rabbi Berman and Dr. Erica Brown, during which he discussed some of the letters, why he wrote the book and future goals he set in writing it. The event ended with Q&As from students who attended the event and a book signing.



STERN COLLEGE FOR WOMEN  
NEW GALLERY SPACE AND  
DIGITAL ART LAB

# BUILDING BETTER

Building A  
Better University





Yeshiva University has a longstanding commitment to providing our students, staff and faculty with the latest and most technologically advanced educational facilities. Under the leadership of Randy Apfelbaum, Chief Facilities Officer for the University, the Department of University Operations is currently overseeing more than 45 construction and infrastructure improvement projects on campus. “University Operations is proud to support the University’s growth and continued success by building and enhancing new facilities,” said Apfelbaum. “These upgrades will lead to better services for students, faculty and staff and an amazing campus environment for all.”

**WILF CAMPUS**

**Furst Hall**, originally built in the 1960s and which houses most of the classrooms on the campus, will be renovated and renamed the Belz Building. Thanks to generous support of the Belz family, this renovation includes recladding the building with an energy-efficient glass curtain wall and establishing an art gallery to showcase the Belz collection of Judaica and Israeli art.

New York Senators Charles Schumer and Kirsten Gillibrand secured \$1.5 million of federal funding to renovate **Lamport Auditorium** in Zysman Hall. The project will restore the facility’s Moorish and Art Deco design elements to their original grandeur while providing important modernizations including cutting-edge audio-visual technologies.

To accommodate a growing Sephardic student population, YU is relocating the Sephardic Beit Midrash to a larger, more spacious room in Morgenstern Hall.

This will create a more expansive and meaningful experience for all students.

The newly completed **Yeshiva College Digital Art and Music Laboratory** in Belfer Hall, funded by the Margaret and Leo Meyer and Hans M. Hirsch Foundation, has been equipped with state-of-the-art computers, software and electronic pianos to foster collaboration between the music and art departments on multimedia presentations.

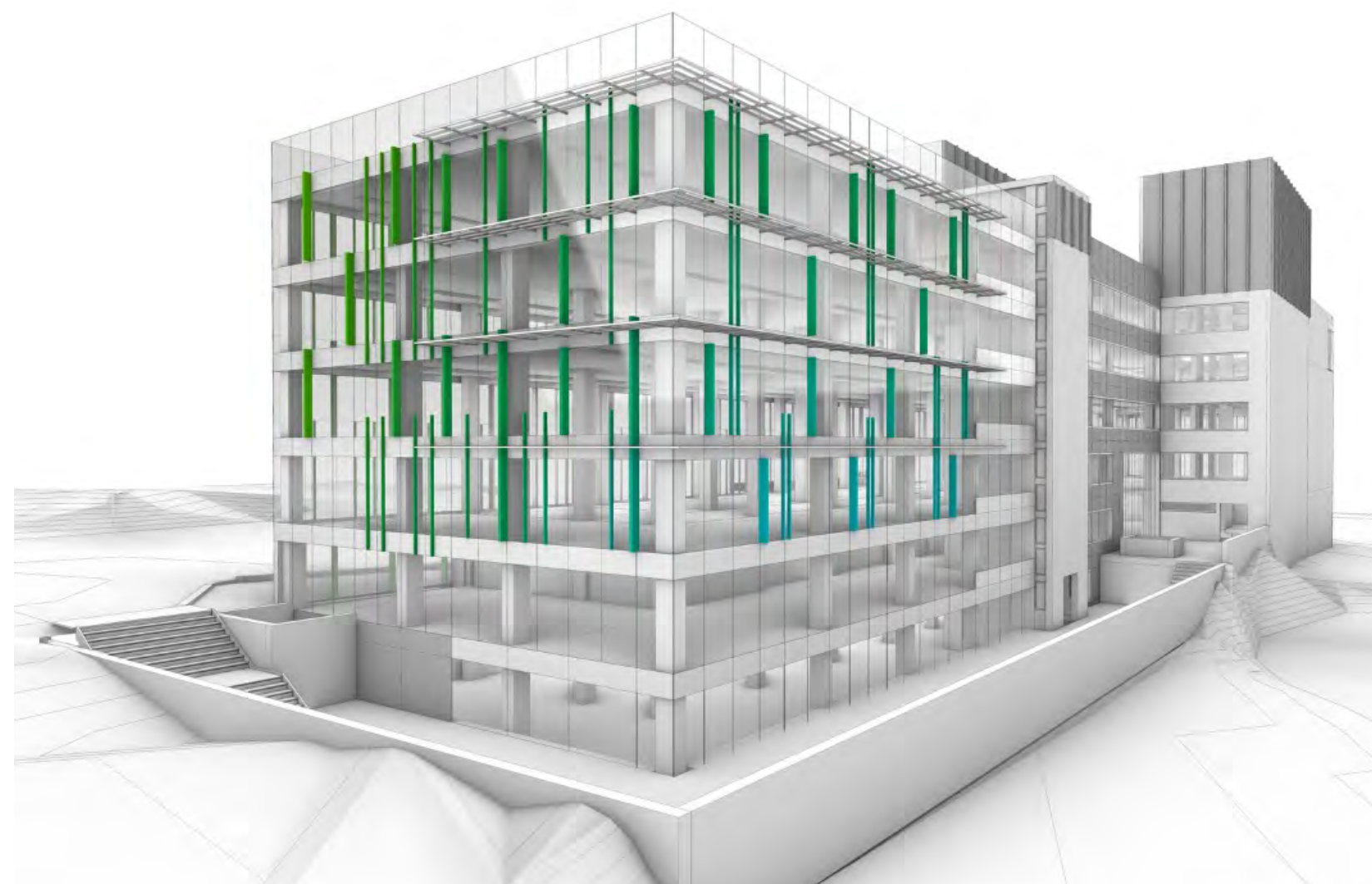
A federal grant of \$1 million as well as a generous gift from the Weissberg family will fund substantial upgrades to **Weissberg Commons** in Belfer Hall, a popular venue for campus and community events. Improvements will include a new conference center, along with new lighting, flooring, wall finishes and a built-in sound and video projection system.

**BEREN CAMPUS**

To augment the Glaubach family’s multi-million dollar gift establishing the **Shevet Glaubach Center for Career Strategy and Professional Development**, YU is opening a new space at 215 Lexington Avenue that includes interview rooms, offices, a pantry and a lounge with audio-video capabilities for remote interactions.

The Katz School has opened the **Security Operations Center** as part of its cybersecurity master’s degree, noted by *Fortune* magazine as one of the country’s leading online cybersecurity programs. This center provides hands-on training and develops crucial cyber-defense skills for students.

**Stern College’s Studio Art** program has reconstructed its classroom and gallery spaces, incorporating improved



An artist rendering of the new Belz Building being constructed on the Wilf Campus.



computers and software for the digital art lab and a more spacious room with enhanced gallery lighting for student presentations.

The new **engineering laboratory in Stanton Hall** at Stern College caters to the growing interest in that field. It features large workbench tables, power outlets, 3D printers, rolling tables for student projects and upgraded audio-visual capabilities, thanks to support from the Margaret and Leo Meyer and Hans M. Hirsch Foundation.

The **Lea and Leon Eisenberg Writing Center** at Stern College will be relocated to a new space and upgraded with a student lounge, a conference room and faculty offices to meet the increasing demand for writing support.

YU is enhancing the **Office of Student Life** with new glass-fronted offices and a lounge area for students.

### BROOKDALE/CARDOZO CAMPUS

The Cardozo Law School's **Perlmutter Center for Legal Justice**, which focuses on training lawyers in the use of scientific evidence and debunking "junk science," will expand its facilities with four offices and two conference rooms, with support from the Laura and Isaac Perlmutter Foundation.

### RESNICK/FERKAUF CAMPUS

The nation's first Non-Verbal Learning Disorder (NVLD) clinic, established by the Ferkauf Graduate School of Psychology in collaboration with The NVLD Project, offers specialized treatment, assessment rooms, a family conference room, teaching and training spaces, a seminar room and a clinic workspace to treat this vastly undertreated condition. The clinic was made possible by Dr. Laura Lemle, a Ferkauf graduate and founder of the NVLD Project.

**The Katz School for Science and Health** has opened two new programs in fully renovated spaces. One is the physician's assistant program built in renovated space in the Van Etten Building, which includes classrooms, simulated cadaver tables, a simulated hospital and exam rooms, faculty offices and a student lounge. The occupational therapy program occupies two fully renovated floors of the Rouso Building and includes faculty offices, classrooms, a simulated apartment with working kitchen and bathroom, a neuro sensory lab and a modalities lab with training equipment for the students.

### SUSTAINABILITY AND INFRASTRUCTURE

Throughout the campuses, YU has launched sustainability initiatives, including new LED lighting which provides better illumination while saving significantly on energy costs, and upgrading to the heating, ventilating and air conditioning (HVAC). Other major projects include elevator replacement in several buildings including Cardozo Law School, Belfer Hall, 245 Lexington and Brookdale Hall, which will provide more reliable and efficient elevator service while consuming less energy.

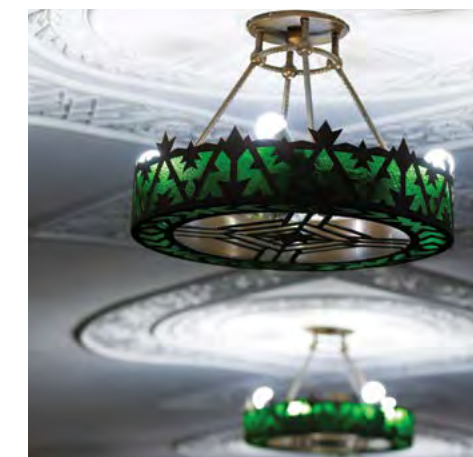


State-of-the-art exam rooms give real world experience to students in the Katz physician's assistant program.

### SECURITY INFRASTRUCTURE

Yeshiva University continues to enhance the security of the campus to ensure the safety of students, faculty and staff. New initiatives, funded by several grants from the New York State Department of Homeland Security, include additional cameras that were added to public areas, hardening of doors and windows and implementation of an upgraded and expanded access control system. ■

*Yeshiva University continues its commitment to creating a dynamic and supportive environment for its students through these ongoing projects. With the help of various funding sources, the university is enhancing its educational facilities and realizing its goal of building a better campus for all.*



Sustainable and energy saving fixtures illuminate our campus.



# YU CELEBRATES RECORD SUCCESS OF RISE UP CAMPAIGN

With over \$100 million raised since its public launch over one year ago, the Campaign has passed its half-way mark and stands at over \$350 million raised toward its goal of \$613 million.

In the first year of its public phase, Rise Up: The Campaign for 613, Yeshiva University's campaign to fund scholarships, facilities and faculty, YU has raised over \$350 million toward its goal of \$613 million. The funding will support investments in YU's four areas of strategic focus — values and leadership, science and tech, entrepreneurship and innovation, and great jobs and impactful careers — strengthening our position as the flagship Jewish university.

Significant scholarship funding has helped YU educate the next generation of leaders, preparing them for lives of personal meaning and great success. Donor generosity in response to Rise Up has resulted in launching many new initiatives, including:

- The new **Belz Building on the Wilf Campus**, which broke ground in 2022.
- **The Graduate Nursing Program** at the Katz School of Science and Health.
- The creation of the **Perlmutter Center for Legal Justice** at Cardozo Law School — a gift from Isaac and Laura Perlmutter — which trains future lawyers in the proper use of forensic evidence in the courtroom and seeks clemency for those serving disproportionate and inequitable sentences.
- **The Lea and Leon Eisenberg Writing Center** at Stern College for Women, dedicated by their children (directors of the Eisenberg Family Foundation), which will greatly enhance the services and programs offered by the current writing center.
- The launch of the **Anita Zucker Program for Jewish Early Childhood Educators**, which will provide scholarships for qualified YU undergraduate students who wish to pursue careers in Jewish early childhood education.
- A gift from the Weissberg family to renovate **Weissberg Commons on the Wilf Campus**.
- Scholarships for the next generation of Jewish educators at the **Azrieli Graduate School of Jewish Education and Administration**.
- The establishment and development of the **Emil A. and Jenny Fish Center for Holocaust and Genocide Studies**, which trains both school and university educators in the field of Holocaust and Genocide Studies and offers graduate programs in the discipline.
- The launch of the **Rabbi Lord Jonathan Sacks Center for Values and Leadership** founded by Terri and Andrew Herenstein, dedicated to the dissemination of core Torah values and the education of tomorrow's leaders through Rabbi Sacks' teachings and life lessons.
- Major expansion of the **Zahava and Moshael Straus Center for Torah and Western Thought**, which educates YU students to be intellectual leaders of tomorrow, well versed in both Torah and Western canon.
- **New engineering labs** on both the Beren and Wilf campuses (Margaret and Leo Meyer and Hans M. Hirsch Foundation).

- **The Selma T. and Jacques H. Mitrani Foundation Computer Science Lab** at Stern College for Women.
- A new **digital arts lab** on the Wilf Campus (Margaret and Leo Meyer and Hans M. Hirsch Foundation).
- The establishment of the **Shevet Glaubach Center for Career Strategy and Professional Development** that is based on best practices in the field of student success.
- The launch of the **Mitzner Master of Science in Real Estate** degree program at Sy Syms School of Business, where students master essential concepts in the real estate industry and access YU's extensive alumni network of real estate professionals.
- **The David Drelich Bloomberg Finance Lab**, featuring the same technology used by the world's leading business and financial professionals, with Bloomberg Terminals — which provide real-time and historical data, market moving news and analytics — serving as a hub for learning.

*“Growing the flagship Jewish university to meet the needs and capitalize on the opportunities of our times is the great educational project of our generation. Now is the time to rise up and become a partner in the future.”*

**RABBI DR. ARI BERMAN**  
President, Yeshiva University

**FOR MORE INFORMATION ON  
THE RISE UP CAMPAIGN, GO TO  
RISEUP.YU.EDU**

**INVEST IN OUR FUTURE  
MAKE AN IMPACT**

## RISE UP

- **Adopt a Scholar** — support students with a gift of \$25,000 a year for the duration of the student's education (four years for undergraduates and between three and five years for graduate students).
- **Do a Mitzvah** — take one of the 613 mitzvot by supporting the university with an annual gift of \$200,000 for five years.
- **Ask us about philanthropic opportunities** in areas that are meaningful to you.

**FOR MORE INFORMATION, CONTACT  
SUSAN MEYERS, VICE PRESIDENT OF  
INSTITUTIONAL ADVANCEMENT, AT  
MEYERS@YU.EDU OR 646.592.6885.**





# Honor Roll of Donors

## PRESIDENT'S SOCIETY



We are deeply thankful for our supporters, alumni and friends, who have made this past year of giving a record success. Last year we saw a 33% increase in cash gifts, and our average over the past three years of total philanthropy is \$85 million, almost triple the number from five years ago.

Through their generous philanthropy, our donors support the most vital priorities of Yeshiva University, such as scholarships, faculty support and research. To show our donors how much we cherish their commitment, we are pleased to list members of Yeshiva University's President's Society, which recognizes donors of this past year to YU who gave \$1,800 or more.

If you would like to learn more about the President's Society or would like to review your listing name, please contact Kurt Deschermeier at [kurt.deschermeier@yu.edu](mailto:kurt.deschermeier@yu.edu) or 646.592.4488.

### ETZ CHAIM (TREE OF LIFE) \$1,000,000+

Marilyn\* and Jack A. Belz and  
The Belz Family Foundations  
Eisenberg Family Foundation  
Debbie and Elliot Gibber and Family  
Drs. Miriam and Felix Glaubach  
Terri and Andrew Herenstein  
Monique and Mordecai\* Katz  
and Family  
The Ira Mitzner and Riva Collins  
Families  
The Laura and Isaac Perlmutter  
Foundation  
Estate of Zelman Gordon Rips  
Zahava and Moshael Straus  
The Jesse S. and Gloria Weissberg  
Family  
Anita Zucker  
Anonymous (x6)

### PRESIDENT'S CABINET \$500,000-\$999,999

Miriam and Alan Goldberg  
Diana Gordon and Alexander  
Tsigutkin  
Beth and Ben Heller

Debra and David Magerman  
Marnie and David Nagel  
Anonymous (x1)

### SENIOR LEADERSHIP \$100,000-\$499,999

Renée and Steve Adelsberg  
Ann and Rabbi Hyman\* Arbesfeld  
Dr. Gail and Jack Bendheim  
The David Berg Foundation  
Estate of Honey Berger  
Hadassah and Marvin Bienenfeld  
Blavatnik Family Foundation  
Marjorie Diener Blenden  
Drs. Jane and David Bloomgarden  
Polly and Gabriel Bousbib  
Jacob Burns Foundation  
Lorraine and Dr. Sorrell Chesin  
The Cons Family  
The David Drelich Irrevocable  
Trust - Fred Krause, Ph.D., Stephen B.  
Drelich, Esq.  
The Zoltan Erenyi Charitable Fund  
Estate of Gertrude and Louis Feil  
Maria and Joel Finkle Foundation  
The First Independent Hebrew  
Congregation of Jamaica  
Rose and Philip Friedman

The Gewurz Family  
Judith and William Greenblatt  
Bob and Debbie Hartman  
Ronny and Toby Hersh  
Rivkie and Lance Hirt  
Alissa and Shimmie Horn  
Jewish Foundation for Education  
of Women  
Debbie and Howard Jonas and Family  
Denise and George Karasick  
Linda and Mark Karasick  
Rina and Dr. Henry Kressel  
The Legal Clinic Fund at The Miami  
Foundation supported by The Abrams  
Foundation, Democracy Fund,  
Heising-Simons Foundation, and  
The Klarman Family Foundation  
Leon Levy Foundation  
The Meyer Foundation  
The Margaret and Leo Meyer and  
Hans M. Hirsch Foundation  
Micah Philanthropies,  
Ann and Jeremy Pava, Trustees  
David Moore  
Samuel & Claire A. Mozel  
Charitable Trust  
Harriet and Joshua L. Muss  
Drs. Jack \*and Gitta Nagel

\*Of blessed memory

Tracey Nash-Huntley and David Huntley  
 Kathleen and Richard Perkal  
 The Vivian G. Prins Foundation, Etta Brandman, Trustee  
 The Julis Rabinowitz Family  
 Ingeborg and Ira Leon Rennert  
 Pamela and George Rohr  
 Vivian and Henry Rosenberg  
 The Moise Y. Safra Foundation, Inc.  
 Estate of Professor Herman P. Salomon  
 Dorothy\* and David\* Schachne and the Schachne Family  
 Seeger Weiss LLP  
 Marilyn Smilowitz  
 The Donald W. Spiro Foundation in memory of Evelyn L. Spiro  
 Norman and Johanne Sternthal  
 Irving I. Stone Support Foundation  
 Sy Syms Foundation  
 Laurie M. Tisch Illumination Fund  
 Heidi and Jack Varon  
 Walder Foundation  
 Arianne and Moshe Weinberger  
 Anonymous (x8)

**DEAN'S LIST**  
**\$25,000–\$99,999**

Estate of Abraham Abramowitz  
 Joseph Alexander Foundation  
 American Endowment Foundation  
 Appeal of Conscience Foundation  
 The Applebaum Foundation Inc.  
 Dr. David Arbesfeld  
 Pnina Arbesfeld  
 Dr. Aimee and Mr. Jonathan Baron  
 Jeff Beja  
 Ruth and Seth Berkowitz  
 Rabbi Ari and Anita Berman  
 Dorothy and Julius Berman  
 Estate of Bernard Bernstein  
 Beverly and Dr. Richard Berry  
 Ellen and Morris Bienenfeld

The Chestnut Foundation  
 Gail and Eric Cohen Charitable Fund  
 Tali Rosenblatt Cohen and Sender Cohen  
 Cybergrants, Inc.  
 Daily Giving Incorporation  
 Adele and Lawrence Diener  
 Mrs. Elaine Marton Diller  
 Tabitha and Brian Dror  
 Harry and Freida Dym  
 Isser and Yona Elishis  
 Cindy and Dr. David Feigenblum  
 Rachelle and Irving Feigenblum  
 Dr. Rina and Mr. Nahum Felman  
 The Harry & Jane Fischel Foundation  
 Arthur Fisher 2007 Trust  
 Judy and Mark Frankel  
 The Samuel Freeman Charitable Trust  
 Raphael D. and Francine Friedlander Foundation  
 Barbara and Michael M. Gamson  
 Estate of Irene Geller  
 Estelle\* and Leonard Glass  
 Harold and Carrie Gordon  
 Dr. Robyn and Mr. Shukie Grossman  
 Jennifer Grubman  
 Ralph Herzka & Danny Heumann, Meridian Capital Group  
 Barbara and Simcha Hochman  
 Janet and Lior Hod  
 Robin and Mark Hoenig  
 Harry and Rose Jacobs Foundation  
 Linda and Michael Jesselson  
 Esti and Benyamin Kaminetzky  
 Adina and Marcos D.\* Katz and Family  
 Becky and Avi Katz  
 Marisa and Dr. Benjamin Kest  
 Kirkland & Ellis LLP  
 Drs. Riki and Mordecai Koenigsberg  
 Israel Koschitzky Charitable Foundation  
 Rachel and Shimon Laufer  
 Linda and Murray Laulich  
 The Lebensfeld Foundation  
 Dr. Joseph Lebovic\* and Dr. Wolf Lebovic

Bruce, Fara and Matthew Leff  
 Laura Lemle Family Foundation  
 Joshua Levian  
 Elayne and Howard Levkowitz  
 Meir and Dassi Lewis  
 Hadassah and The Honorable Joseph Lieberman  
 Rebecca and Saul Lubetski  
 Phyllis and William Mack  
 Estate of Maxwell R. Maybaum  
 Grace Mercado  
 Jack Miller Center  
 Eve and Stephen Milstein  
 The New York Community Trust  
 Timothy Noonan  
 Amanda Nussbaum and Daniel Laifer  
 The Oppenheim Family  
 Tricia and Jason Pantzer  
 Kamal Patel  
 Arnold S.\* and Madaleine Penner Family Foundation  
 Suzanne and Paul\* Peyser  
 Sherry Pinter  
 Estate of Eve Pollack  
 Leyla and Daniel Posner  
 Steven Prystowsky  
 Joyce and Stanley Raskas  
 Sharon and David Rauch  
 Malki and J. Philip Rosen  
 Estate of Rachel Rosenbaum  
 David and Yonina Rosenberg and Family  
 Ruth Tepler Roth and Dr. Philip Roth  
 Sadie and Louis Roth Foundation  
 Henry, Bertha & Edward Rothman Foundation  
 Hedda Rudoff  
 Michelle and Eli Salig  
 Jack Saltz  
 The Lee and Anne Samson Charitable Foundation  
 The Sandel Family  
 Jill and Bruce Schanzer  
 Heather and Lazer Scheiner

\*Of blessed memory

Mindy Schneider and Michael Lesser  
 Geraldine Schottenstein  
 Jeanie and Jay Schottenstein  
 Julie and Shabsi Schreier  
 Sephardic Jewish Center of Canarsie Inc.  
 Jon Shevell Children's Fund  
 Dr. Miriam and Colonel Carl Singer  
 Southern Smoke Foundation  
 Josh and Jennifer Sussberg  
 Mary Isabelle Swartz  
 Lillian and Moris Tabacnic  
 Dr. Michelle and Bruce Taragin  
 Janet and Seth Taube  
 Sarala and Danny Turkel  
 UJA Federation Of Greater Toronto  
 University of Southern California  
 Kate and Shai Waisman  
 Alan and Elaine Weiler  
 The Wein Family  
 Gila and David Weinstein  
 Lauryn and Dr. Kenneth Weiser  
 Morry and Judy Weiss  
 Esther and Louis\* Wertenteil and Family  
 Ilana and Dr. Moshe Wertenteil  
 Hennie and Rabbi Shimon Wolf  
 Yosef Wosk Family Foundation  
 Meredith and Kenny Yager  
 Shira and Dr. Daniel Yoshor  
 Lori and Alan Zekelman  
 The Kenneth and Agnes Zitter Family Foundation  
 Dr. Felice Zwas  
 Anonymous (x16)

**MINYAN CLUB**  
**\$10,000–\$24,999**

American Association for Justice  
 Robert L. Habush Endowment  
 The Louis & Anne Abrons Foundation  
 Helen and Emanuel Adler  
 Leah and Jonathan Adler  
 Rebecca and Ari Adlerstein

Estate of David B. and Rosalind W. Alcott  
 American Psychoanalytic Association  
 Arcadian Cap Group LLC  
 Hudi and Lawrence Askowitz  
 Elisheva and Rabbi Elli Ausubel  
 Annie and Yale Baron  
 David Batalion  
 Andrew and Froma Benerofe  
 Deborah Beran  
 Zelda and Solomon Berger  
 Jeffrey and Nancy Bergman  
 Iona and Rabbi Dr. Ari Bergmann  
 Judy and Norman Bickoff  
 Joan N. and Norman Bluestone Foundation  
 Lois Blumenfeld  
 Sharon and Avram Blumenthal  
 James B. Boskey Memorial Foundation  
 Stephen and Jill Breitstone  
 Adina and Lawrence Burian  
 Jennifer and Saul Burian  
 Joseph Cattan  
 Tzili Charney  
 Drs. Esther and Benjamin S. Chouake  
 Tzippy and Daniel Cohen  
 Elana and Yossi Cohn  
 Diane and Howard Cole  
 Comcast  
 Rosalyn and Rabbi Dr. Abraham Cooper  
 The Daniel Family  
 Daniel Dominguez  
 Sari and Shlomo Drazin  
 Shoshana and Joel Dreifus  
 TED Supply LLC  
 Adena and Ezra Dyckman  
 Estate of Samuel Epstein  
 Bari and Daniel Erber  
 Simone and David Eshaghian  
 Hope Fischer Revocable Trust  
 Nechama and David Fish  
 Adina and Dovid Frankel  
 The Frankel Family  
 Fund for Jewish Education  
 Alan Futerfas and Bettina Schein

Gem Star Foundation Inc.  
 Emily and Seth Gerszberg  
 Gabrielle Gettenberg and David Goldberg  
 Ariel and Baruch Glaubach  
 Ira Gluskin and Maxine Granovsky  
 Gluskin Charitable Foundation  
 Yasha and Nancy Gofman  
 Judi and Arthur Goldberg  
 Perri and Shraga Goldenhersh  
 Prof. Elizabeth Goldman  
 Stacey and Amir Goldman  
 Shulamith Goldstein  
 Jenny and Dr. David L. Gottesman  
 The Greenblum Family Foundation  
 Henna and David Grunblatt  
 Drs. Ariela and Elie Gugenheim  
 The Arie & Eva Halpern Family Foundation  
 Shoshana and Yehuda Halpert  
 Estate of Jack B. Hartog  
 Laura and Jonathan Heller  
 Greta and Eleazer Hirmes  
 Ari Hirt and Karen Blatt Hirt  
 The Hofstedter Family  
 Elizabeth Holland and Gidon Rothstein  
 Dr. Nancy Hollander and Kenneth Sunshine  
 Ann Hornblass  
 Bruce Hurwitz Family Trust  
 Hylands Law Firm  
 The Cindi Jacobs and David Samson  
 CSL Fellowship Fund at the Miami Foundation  
 Doba and Kalman Isaacs  
 Sharon Katz-Pearlman  
 Marc D. Kemp  
 Shira and Yehuda Kessock  
 Elli Klapper  
 Amy and Stephen Kroll  
 Debra and Michael Kupferman  
 Rena and Marc Kwestel  
 Sara and Ira Landsman  
 Sheila and Meyer Last

\*Of blessed memory

Latham & Watkins LLP  
 Leight Foundation  
 Jon Lenzner and Matea Gold  
 Tamra and Dr. Benjamin Lesin  
 The Kenneth Leventhal Foundation  
 Estate of Aaron D. Levine  
 The Howard and Irene Levine Family Foundation  
 Zev Levine  
 Dr. Barry L. and Marcia Wagner Levinson  
 Bev and Marc Lewyn  
 Lorne and Chaya Lieberman  
 Sharon and Harold Lipsky  
 Lynn and Joel Mael  
 Iris and Shalom Maidenbaum  
 Etella and Haim Marcovici  
 Judith and Ralph Marcus  
 Gladys and Matthew Maryles  
 Jed and Simone Melnick  
 Meltzer, Lippe, Goldstein & Breitstone, LLP  
 Aliza Wein Mermelstein and Michael Mermelstein  
 Ruth and Charles Merrill  
 Lisa and Leon Meyers  
 Dr. Nava and Gideon Miller  
 Monique and Robert Mogyoros  
 Cheryl and Dr. Ronald Nagel  
 Dr. Vivian and Rabbi Moshe S. Neiss  
 Sheryl Neuman and Mark Hyman  
 New York Foundation For Eldercare  
 New York University  
 Cody Newton  
 Robert Nitabach  
 NYS Education Department  
 Cali and Moshe Orenbuch  
 Juan F. Otero  
 Deena and Gilad Ottensoser  
 Careena and Drew Parker  
 Dr. Joseph A. Penner  
 Rivka and Dr. Morris Platt  
 The Rabbi Price Foundation  
 The Trustees of Princeton University  
 Gail Propp  
 Jojo Rabinowitz

Jamie and Jonathan Ramsfelder  
 Renaissance Charitable Foundation Inc.  
 Yael and Kenneth Ripstein  
 Robin and David Ritholtz  
 Roberta and Joseph Rotberg  
 Nomi and Yechiel Rotblat  
 Eva and Mordy Rothberg  
 Elana and Marc Rothenberg  
 Stephen\* and Rosalyn Rothman  
 Lisa and Howard Rubin  
 Zvi and Betty Ryzman  
 Wolf Safrin  
 Stephen Sage  
 Tammi and Bennett Schachter  
 Rachel and Menachem Schechter  
 Lori Schottenstein  
 Judy and Joel M. Schreiber  
 Pearl and Carmi Schwartz  
 Sarra and Cyrus Schwartz  
 Debra and David Segal  
 Barbara Seril  
 The Shahmoon Family  
 Sari and Yaakov Sheinfeld  
 Dean Rabbi Dr. Michael D. and Chai Shmidman  
 Rebecca and Yehuda Shmidman  
 Saritte and Hillel Silvera  
 The Slomo and Cindy Silvian Foundation  
 Jennifer and Mark Smith  
 Honorable Robert Smith  
 Dr. Norman Sohn  
 Louis Solomon and Beth Goldman  
 Dr. Arlene (Lu) Steinberg and Dr. Michael Schulder  
 Meryl and Jeremy Strauss  
 Stephanie and Adam Summers  
 Shira and Yudi Teichman  
 Wendy Weiss  
 Rochelle and Joseph Weisstuch  
 Shlomo Werdiger  
 Pami Wexelman  
 Susan and Mark Wiesen  
 Dr. Marcia Robbins Wilf  
 WMM Charitable Foundation

Drs. Abbey and Eric Wolf  
 Deena and Harvey Wrubel  
 Sarah Fastman Zanger and Dr. Ron Zanger  
 Barbara and Dr. David Zukor  
 Anonymous (x18)

**SCHOLARS CIRCLE**  
**\$5,000–\$9,999**

Robert Ades Foundation  
 Lita and Mitchel Aeder  
 Lea and Ami Aharon  
 Miryam and Amos Alter  
 Shari and Robert Alter  
 American Friends of Leket Israel Incorporation  
 Sheila and Ronny Apfel  
 Miriam and Rabbi Shlomo Appel  
 Sara and Dr. Benjamin Arbesfeld  
 Anthony Arnold  
 Karen and Michael Aron  
 David Aronow Foundation  
 Ashendorf Family Foundation  
 Ruth Axelrod  
 Martin Balsam  
 Nazila and Robin Baradaran  
 Lori and Shai Barnea  
 Lisa and Lowell Baron  
 Julia Kagan Baumann  
 Tirza and Ariel Bayewitz  
 Beverly Beja  
 Shifra Drazin Bendheim and Daniel Bendheim  
 Beth and Marc Bengualid  
 Henri Bengualid  
 The Benovitz Family  
 Yogev Berdugo  
 Deborah and Barry Berg  
 Amy and Michael Berger  
 Dr. Daniel and Michelle Berman  
 Carol and Howard Bienenfeld

\*Of blessed memory



Yeshiva University President Dr. Rabbi Ari Berman presenting award the Presidential Medallion for Global Leadership to Dr. Daniel Gold, Head of R&D for the Ministry of Defense of the State of Israel at Commencement 2023 at Madison Square Garden.

Andrea and Bryan Bier  
 B-I-L Office Furniture  
 Binational Science Foundation  
 Janis and Allen Blenden  
 Julia and Norman Bobrow  
 Danielle and Jason Bokor  
 Dr. Morton D. Borg  
 Steven Breitman  
 Madeline and Dr. Michael Brisman  
 Broadcast Music, Inc.  
 Bryan Cave Leighton Paisner, LLP  
 Julie and Emil Buchman  
 Chaya and Dr. Edward Burns  
 Ezra Burstein  
 Vivian and C. Daniel Chill  
 Aviva and Rabbi Chaim Cohen  
 Hilda and Jeremy Cohen  
 Cole Schotz P.C.  
 The Colgan Foundation  
 Aileen and Pace Cooper  
 Michele and Dr. Benjamin Cooper  
 Carole Daman

Doryne and Milton Davis  
 Debevoise & Plimpton LLP  
 Steven Dorfman  
 Karen and Gary Eisenberg  
 Yael and Ben Englander  
 Judy and Peter Faber  
 The Eugene & Estelle Ferkauf Foundation  
 Ronna Finer-Berman and Marvin Berman  
 Prof. Mark and Chava Finkel  
 Lionel\* and Ruth Fisch  
 Suzi and Dr. George Fischmann  
 Jeff and Shari Fishman  
 Dr. Joshua Fogel  
 Foundation@ Cross River  
 Joyce and Michael Frank  
 Drs. Elin and Avi Freilich  
 Marsha and Tom Friedman  
 Roz and Ira Friedman  
 Caron and Steven Gelles  
 Joan and Howard Gellis

Robin and Marc Gelman  
 Nadine Gerson and Robert Zeller  
 Rabbi Aaron and Margie Glatt  
 Ruben and Sarita Gober  
 Shoshana and Boaz Golani  
 Joseph and Laura Goldman  
 Drs. Chana and Shmuel Goldstein  
 Good Health, Inc.  
 Jan and Andrew Groveman  
 Baila and Abraham Gulkowitz  
 Rena Hartman and Ephraim Kutner  
 Moise Hendeles  
 Michelle and Benjamin Hering  
 Herman Forbes Charitable Trust  
 Janet Hersh  
 Chana and M. Avi Hershberg  
 Estate of Jakob Hirschberger  
 Shira and Yisroel Hochberg  
 Mrs. Norma Holzer

\*Of blessed memory

Dr. and Mrs. David Hurwitz  
 Linda and Zalman Indig  
 International Psychoanalytical Association  
 Dr. Esther and President Emeritus Richard M. Joel  
 The Rabbi Dr. Leo Jung Memorial Fund  
 Elana and Josh Kahane  
 Sandy and Rabbi Alan Kalinsky  
 David and Judy Katz  
 Diane and Gary Katz  
 Jed Katz  
 Magda and Harold Katz  
 Rivi and Avi Katz  
 Kilpatrick Townsend & Stockton LLP  
 Dr. Sarah and Rabbi E. Samuel Klibanoff  
 The Koret Foundation  
 Dr. Rama and Mr. Mark Koslowe  
 Naomi and Michael Kraut  
 Selena and Joshua Kutin  
 Debra and Dov Lando  
 Larch Legacy LLC  
 Avi and Aleeza Lauer  
 Marilyn and Eliot Lauer  
 Margaret Lenzner  
 The Family of Terry F. Lenzner  
 Dr. Paul and Esther Lerer  
 Barbara and Tuvia\* Levkovich  
 Jerry G. Levy  
 Marc A. Lieberstein  
 Lauren and David G. Lunzer  
 Rachel and Azriel Mandel  
 Mr. and Ms. Mazzotta  
 Sue McDermott  
 Merchant & Gould P.C.  
 Ronni and Jordan Metzger  
 Susan and Jeffrey Meyers  
 Judy and Monroe Milstein  
 Lauren and Mark Mintz  
 Jonathan Mizrachi  
 Solomon and Sharon Monderer  
 Morrison & Foerster LLP  
 Georgeanne Gould Moss  
 Naomi and Zvi Nachman

Mr. Jacob and Jane Nelson  
 New Castle University  
 New York Council of Defense Lawyers  
 New York Women's Bar Association Foundation, Inc.  
 Dara and David Orbach  
 Arielle and Adam Parkoff  
 Melvin Pekarsky  
 Rabbi Menachem Penner  
 Dr. Chani Penstein and Mr. Jonathan Hornblase  
 Mina and Mayer\* Penstein  
 Miriam and Allen Pfeiffer  
 Janet Pinsky  
 Bruce and Linda Potach  
 Ilana and David Prager  
 Donald Press  
 Nomi and Elliot Press  
 Batya Raskas  
 Paul M. Reinstein  
 Tamar and Dr. Avi Retter  
 Benjamin A. Reynolds  
 Leah and Terry Rifkin  
 Yoanna and Rabbi Benjamin Rofeh  
 Randall and Chava Rose  
 Lisa Rosen, PsyD  
 Rabbi Martin and Karen Rosenfeld  
 Tamar and Yitzchok Rosenthal  
 Mark and Leala Rosner  
 Chaya and Alan Rothman  
 Tzivia and Yossie Rubin  
 Idelle Rudman  
 The Saramar Charitable Fund  
 Elaine and Rudy\* Schott  
 Kimberly and Kenneth Schuckman  
 Rusie and Chaim Schwartz  
 Myra Selesny  
 Steven and Dina Selesny  
 Scott and Jamie Seligsohn  
 Beth and Dr. Joel Selter  
 Asher Shafran  
 Karen and Eric Shakin  
 Allen D. Shensky  
 Victoria Shtainer, Esq.  
 Dr. Marc and Francine Sicklick

Helen and Gerald Silver  
 Karen Greene Silver and Scott Silver  
 Miriam and Tuvia Silverstein  
 Dov Simons  
 The Simons Foundation  
 The Sino-Judaic Institute  
 Jessica and Steven Spector  
 Phyllis and Mark Speiser  
 Steven and Lorraine Spira  
 The Steele Foundation  
 David Stoll MD, Inc.  
 Roberta and Irving Strauchler  
 The Margot Sundheimer Foundation  
 Aviva and Marvin Sussman  
 Emily Tisch Sussman  
 Janice Hopkins Tanne and Sol\* Tanne  
 Shira and Elliot Teichman  
 Carrie and Dr. Jerrold Teitcher  
 Chana Tokayer  
 Nathaniel Y. Tracer  
 Carol E. Trompeter  
 Steve Tugentman  
 Union of Orthodox Jewish Congregations of America  
 Aviva and Avi Vogel  
 Rabbi Myron and Gila Wakschlag  
 Paula and Dr. Leslie Walter  
 Helen and Jacob Weichholz  
 Estate of Jonas F. Weiser  
 Meredith Weiss, MD  
 April and Elliot Wiener  
 The Wollowick Family Foundation  
 Shira and Andrew Wurzbarger  
 Judy and Fred Zwas  
 Anonymous (x16)

**CHAI (LIFE) SUPPORTER  
 \$1,800–\$4,999**

Ace Gold, Inc.  
 Kimberly and Kenny Ackerman  
 John Addeo

\*Of blessed memory

Rabbi Alon and Mrs. Riva Amar  
 The American Scandinavian Foundation  
 Sara and Gregory Angrist  
 Rabbi Jared and Sarit Anstandig  
 Evan Anziska  
 Martin W. Aron  
 Jo-Ann and Mitchel Ashkanazy  
 Erin and Joel Austin  
 Ami and Bracha Avraham  
 Rachel and Rabbi Shalom Axelrod  
 Mitchell Balk  
 Michelle and Mark Barak  
 Lauri and Lewis Barbanel  
 Marilyn Barber  
 Deveaux Barron and Andrew Berkowitz  
 Carolyn and Steven Baruch  
 Dr. Norma Baumel and Rabbi Howard\* Joseph  
 Dr. Ashrei Bayewitz and Dr. Reena Gottesman  
 Moshe Bellows  
 Deborah Berger  
 Dr. Michael and Jeri Bergman  
 Alex Berman  
 Andrew and Ariel Berman  
 Vivian and Stanley Bernstein  
 Dena and Joel Bess  
 Rabbi Richard and Lois Bieler  
 Jeffrey Bier  
 Andrew and Esther Bierbryer  
 Gail Billig  
 Rabbi Jonathan Bindiger and Nahva Hollander  
 The Bitton Family  
 Yehudis and Levi Blachman  
 Devorah and Dr. Melvyn Bleiberg  
 Julia Blinder and Leonard Rubin  
 Ali and Daniel Bloom  
 Alan and Janice Blumenthal  
 David Bodner  
 Brittney Borruso  
 Dr. Selma Botman  
 Elaine and Fred Brasch  
 Shua Brick

Michael Broida  
 Neil Bromberg  
 Gene Brotsky  
 Michael J. Brown  
 Sammy Bruh  
 Alberto Btresh  
 Dr. Michael Buckstein  
 Eddy Cettina  
 Sheldon Chanales  
 Charlotte and Dr. David Chasan  
 Ellen R. Cherrick  
 Joanna Cohen  
 Yael Cohen  
 Congregation Ahavas Achim  
 Congregation Bais Yosef Anshe Chesed  
 Congregation Bnai Yeshurun  
 Dr. Rochelle Cooper-Schneider and Dr. Abraham Schneider  
 Adrienne Cooper-Wolfe and Dr. Michael Wolfe  
 Laura and Douglas Cox  
 Dr. Dana and Rabbi Joshua Dachman-Soled  
 Peggy and Philip Danishefsky  
 Malky and Rabbi Reuven Danzger  
 Simcha and Risa Dauer  
 Naomi and Aryeh Davis  
 Gregory Michael Dell  
 Estate of Vera D. Denty  
 Eitan Drazin  
 Jill Drossman, PsyD  
 Judy and Rabbi Mordy Dubin  
 Rabbi Ira and Chevi Ebbin  
 Rahel and Rabbi Dr. Isaac Ehrenberg  
 Rabbi Dr. Richard Ehrlich  
 Linda and Barry Eichler  
 Rachel Einhorn and Akiva Greenfield  
 The Eliot at Troy  
 Yali Elkin  
 Chana Elman and Samuel Levy  
 Dr. Martin and Gail Elsan  
 Erlbaum Family Foundation  
 Leah and Rabbi Reuven Escott  
 Kim and Steven Ettinger  
 Ronit Farber

Matthew Fassler  
 Esther and Walter Feinblum  
 Roslyn and Toby Feinerman  
 Carole and Arnold\* Feldman  
 Dr. Jeffrey and Mrs. Susan Feldman  
 Judy and Joshua Feldman  
 Rabbi Adam Felsenthal  
 Leora and Jay Fenster  
 Andrew H. Feuer  
 Adam and Karen Feuerstein  
 Asher Finkelstein  
 Ellen Finkelstein  
 Emil A. and Jenny\* Fish  
 Daniel Forman and Jessica Chen  
 Linda and Daniel Forman  
 Erica and Yosef Fox  
 Ronnie and Dr. Melvin Fox  
 Dean and JoAbby Frankel  
 Marc Frankel  
 Rabbi Yair and Dr. Miriam Frankel  
 Laurence Freilich  
 Dana and Jeremy Frenkel  
 Davida and Shimon Fried  
 Ruth and Sholom Fried  
 Sima Fried  
 The Fried Family  
 Fried, Frank, Harris, Shriver & Jacobson LLP  
 Alan Friedman  
 Paula and Dr. Howard Friedman  
 Stephen and Nechama Friedman  
 The Friedman Family  
 Francesco and Marina Galesi  
 Benjamin and Hadassa Gelbtuch  
 Lauren and Michael Gewirtz  
 Amy and Daniel Gibber  
 Faith Ginsburg  
 Shulamit and David Ginsburg  
 Vivian and Mauricio Gluck  
 Rahel and Dr. Scott Goldberg  
 Laura and Jeremy Goldfeder  
 Barry and Judy Goldgrab  
 Robin and Shelby Goldgrab

\*Of blessed memory

Barbara and Shmuel Goldin  
 Lisa Goldman and Joshua Reiss  
 Rachel and Israel Goldman  
 Elyssa and Ezra Goldschmiedt  
 Susan and David Goldsmith  
 Elisheva and Dr. Harris Goldstein  
 Elisheva and Simcha Goldstein  
 Stanley M. Goldstein Memorial Fund II  
 Aviva and Daniel Gordon  
 Rabbi Shalom Gottesman  
 Miri and Menachem Gottlieb  
 The Gould-Shenfel Family Foundation  
 Josh Graham  
 Halana and Alan Greenberg  
 Shira and David Greenberg  
 Aharon Greenblum  
 Aviva and Philip Greenland  
 Rabbi Micah and Mrs. Rivkie Greenland  
 Miriam and Dr. Alan Greenspan  
 Louis D. Greenstein  
 Cecile and Dr. Ed Gromis  
 Dr. Ari and Alison Gross  
 Miriam Gross  
 Sheri and Dr. Fred Grunseid  
 Brian Gurtman  
 The Gutenberg Family  
 Benjamin Halberstam  
 Rabbi BZ Halberstam  
 Lynn and Martin Halbfinger  
 Dina and Natan Hamerman  
 Abraham and Bessie Hann Charitable Foundation Inc.  
 Amy and Joseph Harberg  
 Esther Heimer  
 Robert Heizler  
 Sandra Hendeles-Goldman and Barry Goldman  
 Rabbi Avi and Estee Hirt  
 Virginia Bayer Hirt and Rabbi Robert Hirt  
 Rabbi Jacob T. Hoenig  
 Keith and Sally Hoffman  
 The Hofstedter Family  
 Ann and Dr. Barry Holzer

Alan Horowitz  
 Benjamin Horowitz  
 Steven J. Horowitz  
 Lori and Dr. Shalom Huberfeld  
 Sherry Wilzig Izak  
 Dr. Jessica and David Jacob  
 Brenda and Danial Jacobson  
 Jack Jaffe  
 Isadore and Yetta Jashowitz Charitable Foundation  
 Linda and James Jashowitz  
 JSTOR (Ithaca Harbors, Inc.)  
 Deborah and David Kahn  
 Milton and Sylvia Kain  
 Rochelle and Richard Kale  
 Terri and Richard Kalker  
 Ruth and Jerome Kamerman  
 Ninette and Steven Kanarek  
 The Estate of Fay Kaplan  
 Dr. Judith Kaplan-Weinger and Larry Weinger  
 The Kapustin Family  
 Estate of Hannah Karbal  
 Rabbi Zev Karpel  
 Katten Muchin Rosenman LLP  
 Joan Sadinoff Katz and Henry Katz  
 Dr. Michelle Katz  
 Michelle Katz and Eli Spiro  
 Pesh and Rabbi Simcha Katz  
 Ayelet and Shlomo Katz  
 Chaya and Dr. Marc Katzman  
 Shoshana and David Kaufman  
 Susan and Izzy Kaufman  
 Denise and Alexander Kaye  
 Michael Kaye  
 The Keehn Family  
 Rabbi Jay Kelman  
 Isaac Khafif  
 Roberta and David Kimmel  
 Dena and Moshe Kinderlehrer  
 Sandy and Ed Klar  
 Shari and Dr. Philip Klein  
 Simon Klein  
 Aaron Kleinman  
 Jo and Paul Koenigsberg

Melanie and Yehuda Konig  
 Tamar and Dr. Ira Koppel  
 Rabbi Barry Kornblau  
 Mordechai Kornbluth  
 Yosef Kornbluth  
 Devon and Yoni Kranzler  
 Jo and Sarah Kranzler  
 Marcia and David Kreinberg  
 Mirko Kunstek  
 Dr. Michael Kupferschmid  
 Rebecca and Jeremy Kurz  
 John LaBarre  
 Hillel Laks  
 Vejay Lalla  
 Cheryl and Lee Lasher  
 Adam and Dania Lauer  
 Simcha Lauer  
 The Law & Humanities Institute  
 Adam Lerer  
 Lisa Lerer-Zahn and Uri Lazar  
 Melanie Leslie  
 Anne Claire Lester Foundation, Inc.  
 Rabbi Dr. Yosie and Dr. Rachel Levine  
 Fran and Leon Levy  
 Adina Lewis and Lawrence I. Garbuz  
 Eli Liberman  
 Atara and David Libman  
 Elaine and Scott Liebman  
 Rena and Marc Liebman  
 Hindy and Daniel Lifshitz  
 Miriam and Ezra Lightman  
 Lori and Dr. Elliot Linzer  
 Lester Lipschutz  
 The Litwack Family  
 Richard and Julie Lobel  
 Audrey and Rabbi Haskel Lookstein  
 Lowenstein Sandler LLP  
 Dina Lumerman  
 Rachel and David Lyons  
 The Magence Family  
 Alissa Makower  
 Bryna and David Malitzky

\*Of blessed memory

Rachel and Marvin Mandelbaum  
 Henry Manoucheri  
 Ellen and Sy Marcus  
 Mark and Niva Marmer  
 Alan Masarek  
 Lawrence May  
 Yair and Adeena Mayerfeld  
 The Mayor Family Charitable Fund  
 Rabbi Gary and Beatrice Menchel  
 Dr. Arthur W. Menken  
 Francine and Bernard Mermelstein  
 Merrill Lynch, Pierce, Fenner & Smith Inc.  
 Natalia Meta  
 Rabbi David Miller  
 Howard P. Milstein  
 Shami and Elana Minkove  
 Steven and Gila Miodownik  
 Charles Mirotznik  
 Adina and Norman Misher  
 Rabbi Eddie and Sandy Mittelman  
 Jordana and Rabbi Jonathan Morgenstern  
 Moses & Singer LLP  
 Cindy Moskowitz  
 Shoshana and Elliot Moskowitz  
 Stephanie Mudick  
 Adina and Rabbi Jeffrey Muehlgay  
 Ruhama and Rabbi Elazar Muskin  
 Daniel and Annie Nagel  
 Joshua Nagel  
 Iain Nasatir  
 Morris and Belkis Nasser  
 Jenny Nassimi and Dr. David Nassimi  
 National Indigenous Women's Resource Center  
 Jonathan and Mindy Neiss  
 Barbara and Craig Neuman  
 Nataly and Stephen\* Neuwirth  
 Rachel and Adam Neuman  
 Sarah and Tzvika Nissel  
 Debbie and Robert Nossbaum  
 Gail and Terry Novetsky  
 Dov Ocken  
 The Ohayon Family  
 Robert Oppenheimer

Louis and Rachel Ordentlich  
 Mindy and Henry Orlinsky  
 Aaron and Ahuva Orlofsky  
 Jennifer and David Ottensoser  
 Dr. Stuart and Dr. Betty Ozar  
 Jaclyn and Gonen Paradis  
 Drs. Anne and Herbert Pasternak  
 Paul, Weiss, Rifkind, Wharton & Garrison  
 Shelley and Adam Penstein  
 Glenn and Debby Pfeiffer  
 Evan Pieri  
 Nechama and Rabbi Tuly Polak  
 Rabbi Dale Polakoff  
 Yael and David Polinsky  
 Judi and Stuart Poloner  
 Yale Port  
 Linda Farber Post and Dr. Kalmon Post  
 Rabbi Daniel and Lea Price  
 Nechama and Jonathan Price  
 Adeena and Yaakov Pultman  
 Laura A. Rabb  
 Larry Rabinovich  
 Rachel and Nathan Rabinovitch  
 Dr. Stacey and Rabbi Moshe Radinsky  
 Kristen Ramos and Jon English  
 Daphna and Daniel Raskas  
 Karen and Michael Raskas  
 Andrea S. Rattner  
 Andrew Redd  
 Carol and Rabbi Hyman Reichel  
 Elisheva and Ariel Reiner  
 Esther and David Renzer  
 Yitz and Rachel Richmond  
 Keli Rifkin and Judah Rifkin  
 Rivkin Radler LLP  
 Deborah and Ari Rockoff  
 Yona Rom  
 David Rosen  
 Joshua Rosen  
 Chani and Alfred Rosenbaum  
 Elanna and Gary Rosenbaum  
 Gila and Natan Rosenbaum  
 Mark J. Rosenbaum

Elizabeth and Edmundo Rosenberg  
 Michael Rosenberg  
 Rabbi Jonathan and Tzipporah Rosenblatt  
 Rosenblatt Family Foundation, Inc.  
 Elana and Benjamin Rosenbluth  
 Jacob and Ariella Rosenfeld  
 Ali and Ben Rosenthal  
 Esther S. Rothbaum  
 Marcy Rubin  
 Ms. Bracha Rutner and Mr. Joshua Muskat  
 Heather Rutner and Michael Plotsker  
 Samuel J. & Jean Sable Family Foundation  
 Roya and Michael Samuels  
 Dr. Allen Sapadin  
 Helen and Moshe Sassover  
 Ari Satz  
 Genie and Stephen Savitsky  
 Esther and Ivan Schaeffer  
 Michelle and Robert Schanzer  
 Harvey and Devorah Schatz  
 Rachel and Menachem Schechter  
 Dr. Allen Schick  
 Larry P. Schiffman  
 Tobi and Alan Schilowitz  
 Esther M. Schnitzer  
 Debbie and Michael Schreiber  
 Renee and Elliot Schreiber  
 Zachary Schreiber  
 Elana and Rabbi Ashie Schreier  
 Rena and Elliot Schrier  
 Schulte Roth & Zabel LLP  
 Rabbi David and Bena Schwartz  
 Suzy and Will Schwartz  
 Rabbi Ronald and Judy Schwarzberg  
 Ari and Atara Segal  
 Eleanor and Barry Segal  
 Leah and Shmuel Segal  
 Michael Segal  
 Judy Seiff  
 Eric Senderowicz

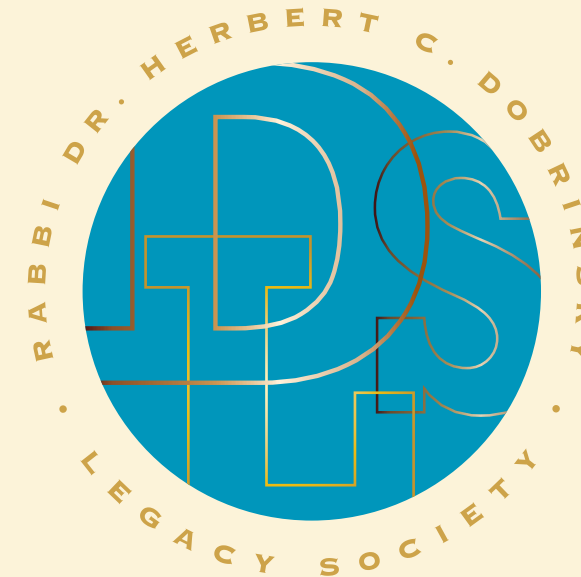
\*Of blessed memory

Malka and Joel Shafran  
 Jenny and Melvin Shay  
 Wendy and Steven Shenfeld  
 Rabbi Avraham Shmidman  
 Estee Shor  
 Kenneth and Bonnie Sicklick  
 Drs. Rachel Katz Sidlow and Robert Sidlow  
 Estate of Rose Siegel  
 Samuel Sigal  
 Elana and Jonathan Silber  
 Leslie and Jeff Silber  
 Dov Silberberg  
 Bonnie and George Silfen  
 The Simon Family  
 Eliza and Moshe Skoczylas  
 Aviya Slutzky-Golombeck and Arel Golombeck  
 Michelle Small-Roth and Aharon Roth  
 Devora and Morris Smith  
 Miriam and Dovid Solomon  
 Chaya S. Soloveichik  
 Ethan and Cheryl Spiegler  
 Aurora and Sander Srulowitz  
 Richard Stareshefsky  
 Evelyn and Averim Stavsky  
 Orly and Alan Steinberg  
 Patti and Michael Steinmetz  
 Dina and Marc Sterman  
 Doron Stern  
 Abby and Aaron Stiefel  
 Blimie and Joel Strauss  
 Randi Strumlauf  
 Mindy Garoon Suchinsky  
 S. Donald Sussman  
 Marilyn Rabhan Swedarsky and Robert Swedarsky  
 Nehama and Lawrence Teitelman  
 Suzanne and Dr. Harold Tepler  
 Mr. Carl and Dr. Heidi Tessler  
 Rachel and Jonathan Tiger  
 Rabbi Perry and Miriam Tirschwell  
 Rabbi Kalman and Dr. Jordana Topp  
 Daniel Treisman  
 Ronni and Shlomo Troodler  
 Naomi and Louis Tuchman

Rachel and Hillel Tuchman  
 Sharon and Gerald Unger  
 Edward Vakhovsky  
 Larisa M. Vaysman  
 Venable LLP  
 Dena Verhoff  
 Miriam Vogel  
 Samuel Wachsmann  
 Max and Audrey Wagner  
 Tammy and Stephen Wagner  
 Ronan Yoel Weinberg Waks  
 Alyson and Ari Walfish  
 Ross and Jessica Wasserman  
 The Wasserman and Hyman Family  
 Grace Weil  
 Yael and Rabbi Steven Weil  
 Fred M. Weiler  
 Mitchell Wein  
 Meryl and Dr. Alexander Weingarten  
 Sharon and Rabbi Jay Weinstein  
 Rabbi Yosef and Rebecca Weinstock  
 Prof. Richard H. Weisberg  
 Greg and Carissa Weiss  
 Ken Weiss  
 Jeffrey Wilder  
 Noel L.C. Williams  
 Dr. Michelle Green Willner and Dr. Alan Willner  
 Douglas R. Wolf

Dr. Danielle Wozniak and Dr. Jeffrey Bendremer  
 Danny and Alicia Yacoby  
 Young Israel Charity Fund  
 Young Israel of Lawrence-Cedarhurst  
 Young Israel of Woodmere  
 Vladislav I. Yusupov  
 Rabbi Ari Zahtz  
 Bella and Rabbi Dr. Joel Zdanowitz  
 Leon Zekaria  
 Beth and Ariel Zell  
 Hadara and Leon Zemel  
 Neiv Ziarno and Limor Ziarno  
 Galina and Amichai Ziegler  
 Efrat and Dr. Uri Zisblatt  
 Hyam L. Zuckerberg  
 Miriam and Jeffrey Zuckerman  
 Anonymous (x29)

\*Of blessed memory



**THE RABBI DR. HERBERT C. DOBRINSKY LEGACY SOCIETY**

The Rabbi Dr. Herbert C. Dobrinsky Legacy Society, which recognizes and honors the loyal donors who have made us aware that they have included Yeshiva University in their estate plans, was established in 2021. This list is in formation. If your name belongs on it, please contact us at [PlannedGiving@yu.edu](mailto:PlannedGiving@yu.edu) or 646.592.6864.

Julia Kagan Baumann  
 Beverly Beja  
 Marilyn\* and Jack Belz  
 Anita and Hal\* Beretz  
 Paula Whitney Best  
 Marjorie Diener Blenden  
 Lotte\* and Ludwig\* Bravmann  
 Joanna Cohen  
 Lynn and Richard Feinson  
 Rabbi Mordecai Halevi Genn, Ph.D.  
 Gewurz Family  
 Drs. Felix and Miriam Glaubach  
 Jenny and Dr. David L. Gottesman

Judith and William Greenblatt  
 Eileen S. Greene  
 Aviva and Philip Greenland  
 Rabbi Dr. Joseph Hirsch  
 Sandy and Rabbi Alan Kalinsky  
 Eleanor and Steven Katz  
 Jed W. Katz  
 Rona and Ira Kellman  
 Howard S. Levine  
 Alexandra Margolis and Bernard Buda  
 Charles M. Mirotznik  
 Vivien Naim  
 David Oden  
 Dr. Joseph A. Penner

Dr. Lewis J. Rubin  
 Albert Sayegh  
 Judith and Rabbi Ronald Schwarzberg  
 Baruch and Ora Sheinson  
 Roberta and Irving Strauchler  
 Dr. Myra L. Weiner  
 Morry and Judy Weiss  
 Anonymous (x12)

\*Of blessed memory



**BENEFACTORS**

Yeshiva University Benefactors, donors with lifetime cumulative gifts over \$1 million, enable the University to pursue larger initiatives and respond promptly to new opportunities. Many Benefactors also serve in leadership roles at Yeshiva University. With the utmost gratitude, we thank them for the multifaceted role they play in ensuring our University's success.

S. Daniel Abraham  
 Renée and Steve Adelsberg  
 Dr. Joseph\* and Rachel\* Ades  
 Estate of Irma Adler  
 Dr. André Aisenstadt\*  
 Chief Rabbi Dr. Isaac Abraham\*  
 Alcalay and Jelena (Rachel)\* Alcalay  
 Estate of Naumi Alcalay  
 Joseph Alexander Foundation  
 Alpern Family Foundation, Inc.  
 Bernard E.\*, Jacob J.\* , and  
 Lloyd J.\* Alpern  
 Barbara and Philip Altheim  
 Linda and Earle Altman  
 Nathan S. Ancell\*  
 Estate of Ruth Anixter  
 Mrs. Moses L. Annenberg\*  
 The Hon. Walter H. Annenberg\*  
 Leila\* and Joseph\* Applebaum  
 Estate of Nathan Appleman  
 Rabbi Hyman\* and Ann Arbesfeld  
 Ambassador Roland\* and Dawn Arnall  
 The Atlantic Philanthropies  
 Atran Foundation  
 Joan\* and Lester\* Avnet  
 David J. Azrieli\*  
 Frederick\* and Eleanore\* Backer  
 Jeannette P. Barron Charitable Trust  
 Charles C. Bassine\*  
 Florence\* and Theodore\* Baumritter  
 Dr. Jayne G. and Harvey Beker  
 Diane\* and Arthur B.\* Belfer  
 Renée E. and Robert A. Belfer  
 Marilyn\* and Jack A. Belz

Sarah\* and Philip\* Belz  
 Els\* and Charles\* Bendheim  
 Dr. Gail and Jack Bendheim  
 Estate of Peter Benefeld  
 Estate of William Benenson  
 Dorothy\* and Carl\* Bennett  
 Harry H. Beren\*  
 Israel Henry Beren\*  
 Israel Henry Beren Charitable Trust  
 Robert M. Beren\*  
 David Berg Foundation  
 Margaret and Sol\* Berger  
 Max Berger Trust  
 Dorothy and Julius Berman  
 Dassie and Rabbi Marvin Bienenfeld  
 Gertrude\* and Morris\* Bienenfeld  
 Halina\* and Samson\* Bitensky  
 Marjorie Diener Blenden  
 Harold\* and Muriel\* Block  
 Tekla\* and Simon A.\* Bond-Cyvia and  
 Moshe Bezalel Baumblat  
 Lotte\* and Ludwig\* Bravmann  
 The Breast Cancer Research  
 Foundation, Inc.  
 Carl S.\* Bresnick and Don A.S.  
 Breswick  
 The Edna S. Brodie Trust  
 The Brookdale Foundation  
 Joseph\* and Gertrud\* Buchler  
 Jacob Burns Foundation  
 Sylvia\* and Irwin S.\* Chanin  
 Leon H.\* and Tzili Charney  
 Dr. Lillian Chutick\*  
 Dr. Rebecca Chutick\*  
 Rose\* and Wilfred P.\* Cohen

Tali Rosenblatt Cohen and  
 Sender Z. Cohen  
 Herman Dana Trust  
 Dr. Philip David  
 J. Morton and Rosalind\* Davis  
 Leonard and Sophie Davis Foundation  
 Estate of Rebecca Davis  
 Mirrel Davis\*  
 Herbert S.\* and Naomi\* Denenberg  
 Leonard\* and Bea\* Diener  
 Dr. Gerald and Myra Dorros  
 Erica A. Drake  
 Lea\* and Leon\* Eisenberg  
 Eisenberg Family Foundation  
 Warren and Mitzi Eisenberg  
 Todd M. Eisenbud  
 El-An Foundation (Schottenstein,  
 Deshe, and Diamond Families)  
 The Ellison Medical Foundation  
 Col. and Mrs. Jehiel R.\* Elyachar  
 Estate of Joseph Emanuel for the  
 Benzion, Clara, Jacob, Sarah and  
 Joseph Emanuel Fund  
 Israel Englander  
 Kurt\* and Margaret\* Enoch  
 Estate of Ernst L. Ernest  
 Ebrahim Ben Davoud Elishah  
 Eshaghian\*  
 Etra Family  
 Sara\* and Kalman\* Fainzylber  
 Anne\* and Isidore\* Falk  
 Rose C. Falkenstein\*  
 Lee and Jeffrey J. Feil

\*Of blessed memory

Feil Family Foundation  
 Abraham\* and Lillian\* Feinberg  
 Betty and Sheldon\* Feinberg  
 Harold and Isabel Feld  
 Charitable Trust  
 Benjamin B. Ferencz  
 Estelle and Eugene\* Ferkauf  
 Nathan\* and Vivian\* Fink  
 Maria\* and Joel\* Finkle  
 Jennifer\* and Emil Fish  
 Gwen and Lester\* Fisher  
 Martin A.\* and Emily L. Fisher  
 Dr. Jack Fishman\*  
 Dr. Stephen H. Floersheimer\*  
 Leo\* and Florence Forchheimer  
 Leo and Julia Forchheimer Foundation  
 The Ford Foundation  
 George\* and Elizabeth\* Frankel  
 Estate of Charles Friedberg  
 Max L.\* and Sadie\* Friedman  
 Rose and Philip Friedman  
 Eugenie\* and Leon\* Fromer  
 George J. Fruhman, M.D.\*  
 Sol and Hilda Furst Foundation  
 Violet\* and Gerald\* Furst  
 Michael M. and Barbara Gamson  
 Estate of Irene Geller  
 Brenda and Samuel Gewurz  
 Debbie and Elliot Gibber  
 Joseph\* and Faye\* Glatt  
 Drs. Felix and Miriam Glaubach  
 Jacob Glueck\*  
 Basheva and Murray Goldberg  
 Rachel\* and Samuel H.\* Golding  
 Samuel H.\* Golding and  
 Jerrold R. Golding  
 Edna S. and David Goldman  
 Horace W. Goldsmith\*  
 Horace W. Goldsmith Foundation  
 The Abraham and Mildred Goldstein  
 Charitable Trust  
 Roslyn and Leslie\* Goldstein  
 Ruth and I. Lewis\* Gordon  
 Diana Gordon and  
 Alexander Tsigutkin  
 Mr. and Mrs. Benjamin Gottesman\*

D.S. and R.H. Gottesman Foundation  
 David S.\* and Ruth L. Gottesman  
 Lawrence Gralla\*  
 Shirley\* and Milton\* Gralla  
 Jeanne Gray\*  
 Morris (Moshe)\* and Charlotte\* Green  
 Max\* and Marion\* Grill  
 Robyn and Shukie Grossman  
 Ronald\* and Ethel\* Gruen  
 Leonard and Chani Grunstein  
 Caroline\* and Joseph S.\* Gruss  
 The Gruss Lipper Family Foundation  
 Abraham S.\* and Irene\* Guterman  
 Raymond\* and Bettie\* Haas  
 Arie\* and Eva\* Halpern  
 Sam\* and Gladys Halpern  
 Susan U. Halpern  
 Estate of Irma Hamburger  
 Marilyn C. and Jerry S.\* Handler  
 Fran and Mel Harris  
 Benjamin and Beth Heller  
 Fanya Gottesfeld Heller\*  
 Terri and Andrew Herenstein  
 Erwin\* and Madeleine\* Herling  
 Janet and Arthur Hershaft  
 Albert Herskovits and Korda\* Caplan

Samuel\* and Ronnie Heyman  
 Mimi\* and Howard\* Hirsch  
 Estate of Irma T. Hirschl  
 Dr. Rivkie and Mr. Lance Hirt  
 Janet and Lior Hod  
 Shimmie and Alissa Horn  
 Carl C. Icahn  
 E. Billi Ivry\*  
 Joel Jablonski\*  
 Harry and Rose Jacobs Foundation  
 The Yolanda G. Jacobs Trust  
 Pauline Perlmutter Jarett\*  
 Erica\* and Ludwig\* Jesselson  
 Jesselson Family  
 Jewish Foundation for Education  
 of Women  
 Debbie and Howard Jonas & Family  
 Jim Joseph Foundation  
 Sandra and Nathan S. Kahn  
 Joan and Ernest\* Kalman  
 Rae\* and Henry\* Kalman  
 Maurice S. Kanbar\*  
 Estate of Arthur Kaplan  
 Adina and Marcos D.\* Katz

\*Of blessed memory





Ida\* and Louis\* Katz  
 Jed W. Katz  
 Marilyn and Stanley M. Katz  
 Mordecai D.\* and Dr. Monique C. Katz  
 Henry and Elaine Kaufman Foundation  
 Mildred\* and Bernard H.\* Kayden  
 W.M. Keck Foundation  
 The Joseph P. Kennedy, Jr. Foundation  
 Joseph Kerzner\*  
 Kestenbaum Family Foundation  
 Martin Kietoff\*  
 Lucille\* and Edward A.\* Kimmel  
 F.M. Kirby Foundation  
 The E.P. and Roberta L. Kirschner Trust  
 George and Adele\* Klein  
 Marc\* and Doris Kolber  
 Sarah Korein\*  
 Saul and Mira\* Koschitzky and Henry and Julia\* Koschitzky  
 Estate of David R. Koston  
 Estate of Aileen S. Kraditor  
 Lola\* and Saul\* Kramer  
 Tamara\* and Charles A. Krasne  
 Rina and Henry Kressel  
 The Joan B. Kroc Foundation  
 Doris\* and Dr. Ira\* Kucin  
 Fran and Rabbi Jonah Kupietzky  
 Seryl and Charles Kushner  
 Emily Fisher Landau  
 Mildred\* and William S.\* Lasdon  
 Linda and Murray Laulich  
 Dr. Joseph Lebovic\*  
 Thomas H. Lee\* and Ann G. Tenenbaum  
 Bruce Leff  
 Ethel\* and Samuel J.\* LeFrak  
 Irwin\* and Silvia\* Leiferman  
 Estate of Bertram Leslie in memory of Nathan and Julia Levy  
 Dorothy Drexler Leuw\*  
 Anne\* and Gabriel\* Levine  
 Blanche R. Levine\*  
 Rhoda Miriam Levine  
 The Levitt Foundation  
 Benjamin J.\* and Anna E.M.\* Levy

Betty\* and Norman F.\* Levy  
 Jacob P.\* and Estelle\* Lieberman  
 Marcia and Ronald Lissak  
 Frances\* and Herman\* Lopata  
 Jeffrey H. Loria  
 Evlynn\* and Max M.\* Low  
 Evelyn and Joseph I.\* Lubin  
 H. Bert\* and Ruth\* Mack  
 The Honorable Earle I. Mack  
 Debra and David Magerman  
 Gela, Leon and Michael H. Maneli Foundation  
 Ira Marienhoff\*  
 Lucille P. Markey Charitable Trust  
 Estate of Marie Markus  
 The G. Harold and Leila Y. Mathers Charitable Foundation  
 Maxwell R. Maybaum\*  
 Mazer Family  
 Ceil\* and Joseph\* Mazer  
 Estate of Arthur Mendheim  
 Ursula\* and Hermann\* Merkin  
 Ruth Merns  
 Sydelle and Arthur I.\* Meyer  
 Micah Philanthropies,  
 Ann and Jeremy Pava, Trustees  
 Charles R. Michael  
 Jakob Michael\*  
 Estate of Bernard Milch  
 Diane\* and Ira M. Millstein  
 Marco\* and Louise\* Mitrani  
 Selma\* and Dr. Jacques\* Mitrani  
 Ruth\* and David\* Mitzner  
 Dr. Riva Collins and Ira Mitzner Families  
 Benedict and Arlene Morelli  
 Estate of Arthur P. Morgan  
 Samuel Morganroth\*  
 Samuel\* and Claire A.\* Mozel  
 Ruth\* and Hyman\* Muss Family  
 Joshua L. and Harriet Muss  
 Stanley H. and Toby Muss  
 Drs. Jack M.\* and Gitta Nagel  
 Marnie and David Nagel  
 Dr. Abraham Naymark\*  
 Sammy\* and Aviva Ofer

Sylvia\* and Robert S.\* Olnick  
 Sidney L.\* and Miriam K.\* Olson  
 Frank Pecenik\*  
 Arnold S. Penner\* and Madaleine Berley  
 Dr. Joseph A. Penner  
 The Laura and Isaac Perlmutter Foundation  
 The Carroll and Milton Petrie Foundation  
 Pew Charitable Trust  
 Laura and John J. Pomerantz  
 Estate of Beatrice Potter  
 The Price Family Foundation  
 Terry\* and Asriel\* Rackow  
 Estate of Yolaine G. Randall  
 Estates of Benjamin, Minna, and Robert A. Reeves  
 Estate of Alfred H. Reich  
 Estate of Gertrude E. Reicher in memory of Eleazer and Feige Reicher  
 Ingeborg and Ira Leon Rennert  
 Jack\* and Pearl\* Resnick  
 Judith and Burton P.\* Resnick  
 Charles H. Revson\*  
 George Richmond, MD\*  
 Estate of Zelman Gordon Rips  
 The Ritter Foundation  
 Dr. Marcia Robbins-Wilf  
 Robin Hood Foundation  
 Evelyn\* and Israel\* Rogosin  
 The Aaron, Martha, Isidore N. and Blanche Rosansky Foundation  
 Estate of Stella Rose  
 Rita\* and Philip\* Rosen  
 Judy R.\* and Alfred A.\* Rosenberg  
 Vivian Glueck Rosenberg and Henry Rosenberg  
 Wallace D. Ross\*  
 Hedwig\* and Ernst\* Roth  
 Julia\* and Eli L.\* Rousso  
 Louis E.\* and Dora\* Rousso  
 Lawrence Ruben, Esq.\*  
 Estate of Jack Rubin

\*Of blessed memory

Lewis J. Rubin, MD  
 Florence\* and Irving\* Rubinstein  
 Robert Eli and Renée Rubinstein  
 Estate of Lila Rudin  
 The Rudin Family  
 Bernice L.\* and Cecil\* Rudnick  
 Milton Rybkowski\*  
 The Family of Chella and Moise\* Safra  
 Edmond J. Safra\*/Republic National Bank of New York  
 Anita\* and Jack Saltz  
 Cindi and David Samson & Family  
 Maurice H. Saval\*  
 Dorothy\* and David I.\* Schachne  
 Frances and Daniel\* Schamarock  
 Fiona and Michael Scharf  
 Edythe\* and Sol\* Scharfstein  
 Estate of Anne Scheiber  
 Sol T.\* and Hortense\* Scheinman  
 Betty\* and Herbert H.\* Schiff  
 Fredericke\* and Lawrence\* Schleifer  
 Helen\* and Irving\* Schneider  
 Henry R. Schnitzer\*  
 Geraldine Schottenstein  
 Jay and Jeanie Schottenstein  
 Jerome\*, Saul\*, Alvin\* Schottenstein Families  
 Mozes S. Schupf Foundation  
 David\* and Irene\* Schwartz  
 The Beatrice and Samuel A. Seaver Foundation  
 David and Fela Shapell Family Foundation  
 Ruth and Irwin\* Shapiro  
 Dorothy\* and Martin\* Silverman  
 Estate of Nina Silverman  
 Patty and Lorin Silverman  
 Stanley\* and Raine Silverstein  
 Sydel\* and Michael\* Singer  
 The Paul E. Singer Foundation  
 Branna\* and Irving\* Sisenwein  
 The Skirball Foundation  
 The Smart Family Foundation  
 Marilyn and Herbert\* Smilowitz  
 Estate of Sidney Solid  
 Sheldon H. Solow\*

Helen\* and Irving\* Spatz  
 The Helen & Irving Spatz Foundation  
 Estate of Benjamin and Frances Sperling  
 Ronald P. Stanton\*  
 Estate of Harold R. and Lillian Stein  
 Estate of Helen Stein  
 Judith\* and Dr. Edward L.\* Steinberg  
 Jeffrey J. Steiner\*  
 Ghity\* and Max\* Stern  
 Leonard N. Stern  
 Estate of Margarethe I. Stern  
 Stanley E.\* and Simha\* Stern  
 Johanne and Norman Sternthal  
 Louise and Michael Stocker  
 Stone-Sapirstein-Weiss Family  
 Irving I. Stone Support Foundation  
 Zahava and Moshael J. Straus  
 Rosa\* and Harry\* Strygler  
 Leo\* and Rachel\* Sussman  
 Gerald\* and Mary Swartz  
 Sy Syms Foundation  
 Joseph Tanenbaum\*  
 Benjamin Teitel\*  
 Florence\* and Herbert\* Tenzer  
 Laurie M. Tisch Illumination Fund  
 Sheryl and Daniel R. Tishman  
 Estate of Joseph Tonkin  
 Estate of Dr. Sadie Edith Trachman and Dr. Miriam E. Trachman  
 Louis A. Tuvin\*  
 Siegfried\* and Irma\* Ullmann  
 Milton\* and Pearl\* Unger  
 Unterweiser Estate  
 Heidi and Jack Varon  
 Jack D.\* and Doris\* Weiler  
 Kathy and Samuel G. Weinberg  
 Evelyne\* and Murray\* Weinstock  
 Jacob D.\* and Bronka\* Weintraub  
 The Jesse S. and Gloria Weissberg Family  
 Sidney Weisner\*  
 Morry and Judith Weiss  
 Edna\* and K.B.\* Weissman  
 Esther and Louis\* Wertenteil  
 Judy and Josh S. Weston

Harry\* and Judith\* Wilf  
 Joseph\* and Elizabeth Wilf  
 Leonard and Beth Wilf  
 Mark and Jane Wilf  
 Zygmunt and Audrey Wilf  
 Benjamin and Susan Winter  
 Elliot K. and Nancy Wolk  
 The Wollowick Family Foundation  
 Estate of Dr. Benjamin Wolstein  
 Deena and Harvey Wrubel  
 Wurzweiler Foundation  
 David\* and Grace\* Yagoda  
 Rose\* Yavarkovsky and Ira\* Yavarkovsky  
 Yeshiva University Women's Organization  
 Lori and Alan Zekelman  
 Zises Family  
 Dr. and Mrs. Jonathan Zizmor  
 Wendy Zizmor  
 Anita G. Zucker  
 Lenore\* and Larry\* Zusman  
 Benjamin Zysman\*  
 David H. Zysman\*  
 Anonymous (23)

\*Of blessed memory



**ADMINISTRATION**

Rabbi Dr. Ari Berman  
*President*

Selma Botman, Ph.D.  
*Provost and Vice President for Academic Affairs*

Herbert C. Dobrinsky, Ph.D.  
*Vice President of University Affairs*

Ellen Finkelstein  
*Chief Strategy Officer for the Office of Institutional Advancement*

Patrick Gallagher  
*Vice President of Administrative Services and Chief Administrative Services Officer*

Andrew J. Lauer, Esq., JD, LL.M.  
*Vice President for Legal Affairs, Secretary and General Counsel*

Susan Meyers  
*Vice President and Chief Advancement Officer in the Office of Institutional Advancement*

Mike Schreiber  
*Vice President of Business Affairs and Chief Financial Officer*

Julie Schreier, MBA  
*Vice President and Chief of Staff*

Doron Stern, MBA  
*Vice President of Communications and Chief Marketing and Enrollment Officer*

Danielle Wozniak, Ph.D.  
*Vice President for Global Strategy and Business Development*

**ACADEMIC LEADERSHIP**

Sara Asher, PsyD  
*Dean, Undergraduate Student Life*

Karen Bacon, Ph.D.  
*The Mordecai D. Katz and Dr. Monique C. Katz Dean of Undergraduate Faculty of Arts and Sciences*

Cantor Eric S. Freeman, BA  
*Associate Director, Philip and Sarah Belz School of Jewish Music*

Dr. Erica Brown  
*Vice Provost for Values and Leadership and Director of the Sacks-Herstein Center*

Paul Glassman, MArch, MS, MBA  
*Director of University Libraries*

Harris Goldstein, M.D.  
*Interim Dean, Albert Einstein College of Medicine*

Leslie Halpern, Ph.D.  
*Dean, Ferkauf Graduate School of Psychology*

Rabbi Yosef Kalinsky, Ph.D.  
*Dean, Undergraduate Torah Studies*

Melanie Leslie, JD  
*Dean, Benjamin N. Cardozo School of Law*

Randy Magen, MS, Ph.D.  
*Dean, Wurzweiler School of Social Work*

Yael Muskat, PsyD  
*Dean of Mental Health and Wellness and Director of the Counseling Center*

Chaim Nissel, PsyD  
*Vice Provost, Dean of Graduate Student Life*

Rona M. Novick, Ph.D.  
*Dean, Azrieli Graduate School of Jewish Education and Administration*

Rabbi Menachem Penner, BA  
*The Max and Marion Grill Dean, Rabbi Isaac Elchanan Theological Seminary*

Paul Russo, Ph.D.  
*Vice Provost, Dean, Katz School of Science and Health*

Shoshana Schechter, MA  
*Associate Dean of Torah Studies, Stern College for Women Director, Mechina Program*

Tim Stevens, Ph.D.  
*Deputy Provost MSCHE ALO, NYSED CEO-Liaison, NC-SARA Primary Contact*

Noam Wasserman, Ph.D.  
*Dean, Sy Syms School of Business*

**BOARD OF TRUSTEES**

Ira Mitzner  
*Chairman*

Robert M. Beren\*  
David S. Gottesman\*  
Dr. Henry Kressel  
Moshael J. Straus  
Morry J. Weiss  
*Chairmen Emeriti*

Ludwig Bravmann\*  
*Vice Chairman Emeritus*

Philip Friedman  
Elliot Gibber  
Michael D. Katz  
*Vice Chairmen*

Michael Jesselson  
*Treasurer*

President Ari Berman  
Julius Berman  
Marvin S. Bienenfeld  
Marjorie Diener Blenden  
Ira Dizengoff  
Michael Gamson  
Dr. Felix L. Glaubach  
Alan E. Goldberg  
Benjamin Heller  
Andrew Herenstein  
Lance Hirt  
Mitchell R. Julis  
Senator Joseph Lieberman  
Matthew J. Maryles  
Joshua L. Muss  
David J. Nagel  
J. Philip Rosen  
Jay Schottenstein  
Irwin Shapiro\*  
Mark Silber  
Mark Wilf  
Zygmunt Wilf  
Shira Yoshor

S. Daniel Abraham  
Hal H. Beretz\*  
J. Morton Davis  
Jay H. Zises  
*Honorary Trustees*

Dr. Jayne G. Beker  
Jack A. Belz  
Sender Z. Cohen  
David Eshaghian  
*Trustees Emeriti*

Richard M. Joel  
*President Emeritus*

\*Of blessed memory



# Yeshiva University

500 West 185th Street

New York, NY 10033

646.592.8400

[www.yu.edu](http://www.yu.edu)